



Smart Solutions for Today's Geoscientist



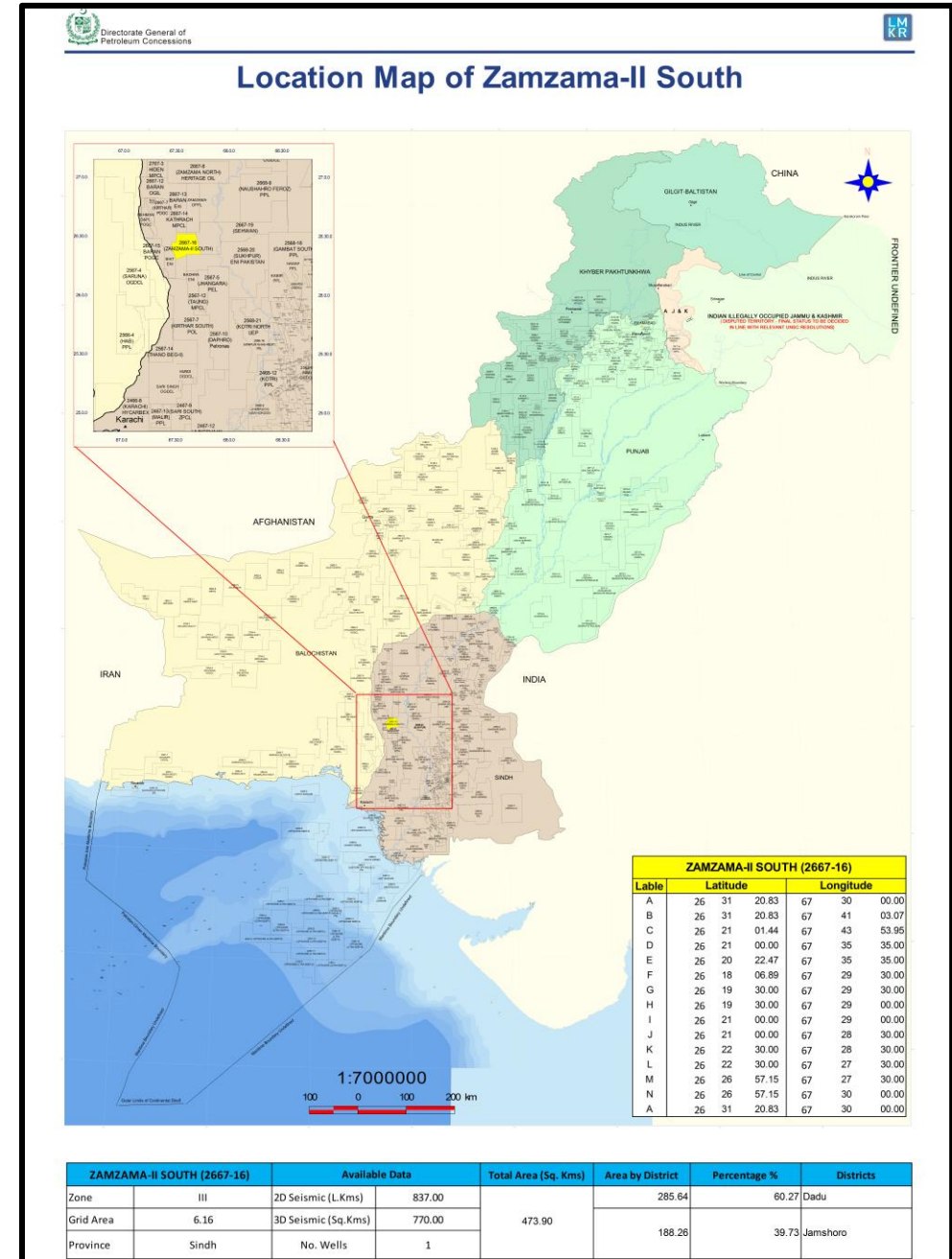
BLOCK: ZAMZAMA-II SOUTH (2667-16)

ONSHORE BLOCK BIDDING ROUND 2025

MINISTRY OF ENERGY PETROLEUM DIVISION (DGPC)

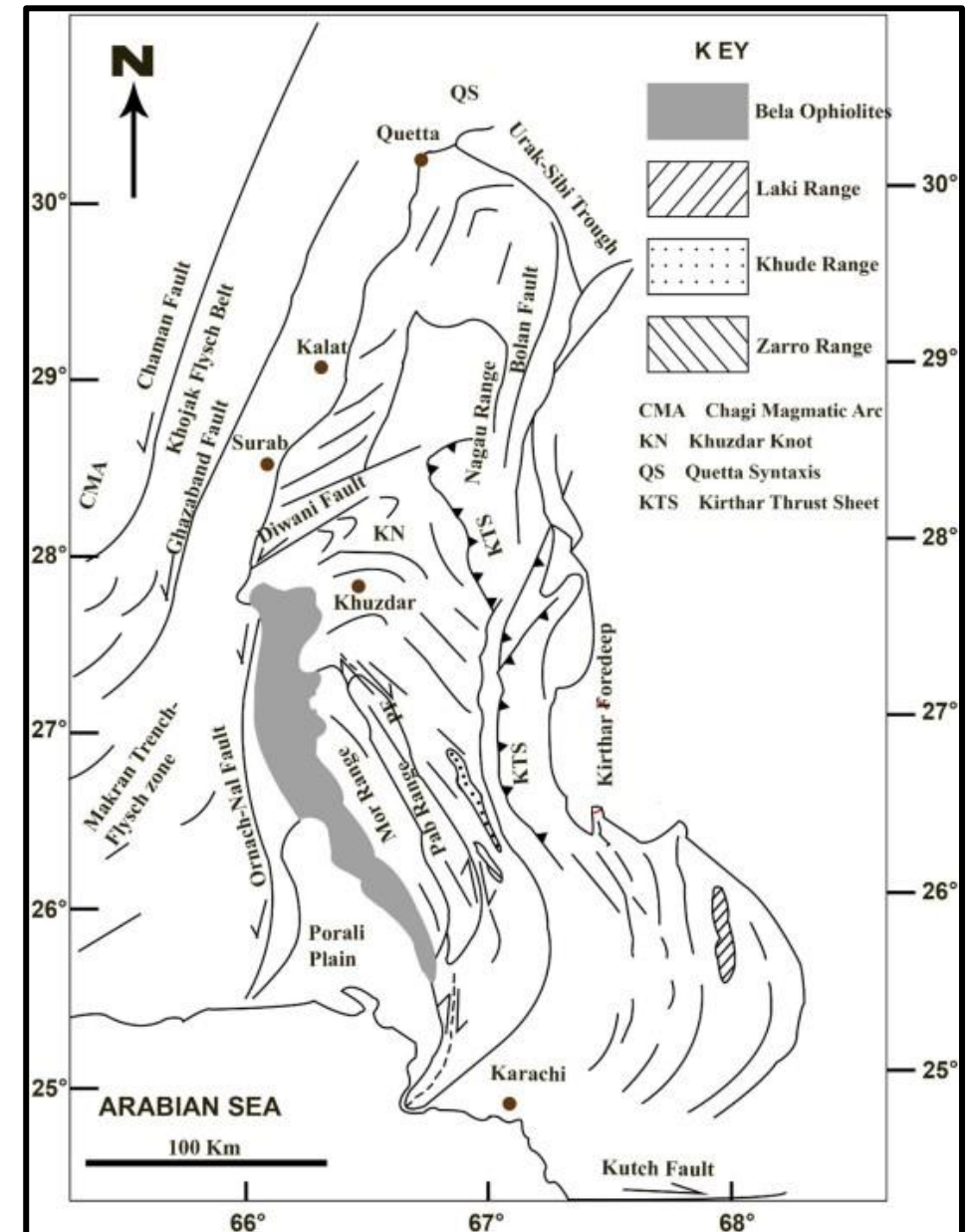
Introduction

- ZAMZAMA-II SOUTH block covers an area of 473.90 Sq. Kms.
- Location: Dadu and Jamshoro district, Sindh, Pakistan.
- Geological basin: Kirthar foldbelt, Pakistan.
- The block falls in Prospectivity Zone III.
- Estimated Resources of the Lower Indus Basin:
 - Oil: 4740 million barrels.
 - Gas: 64.75 trillion cubic feet.
- ENI, PPL, LAMSO, OGDCL, and BHP acquired 2d and 3d seismic data approximately 837 L. Kms and 770 Sq. Kms in the block within the years 1980, 1996, 1997, 2003, 2004, 2010, and 2011.
- The block is surrounded by Bhit (West), Sukhpur(East), Naing Sharif (South) and Zamzama-West (North) blocks.
- The well drilled in the vicinity of block is Manchar X-01.



Geological Map

- The collision of Indian and Eurasian plates resulted in the creation of north–south trending Kirthar Fold Belt (KBF) in the Southern Indus Basin.
- The basin is comprised of five structural elements units, i.e., Kirthar Fold Belt, Kirthar Foredeep, Karachi Trough, Thar Platform, and Offshore Indus.
- The present study area belongs to the western portion of Kirthar Foredeep, which is located between the Kirthar Foldbelt and Thar Platform.
- In the north of Kirthar Foredeep, Jacobabad Mari Kandkot high is present. It is bounded in the south by the Hyderabad high and in the east by the Tharpakar high in the west by KBF Bela Ophiolite.



Petroleum System

Source Rock:

- The Cretaceous Sembar shale are considered to be the main source rock in this area.

Reservoir Rock:

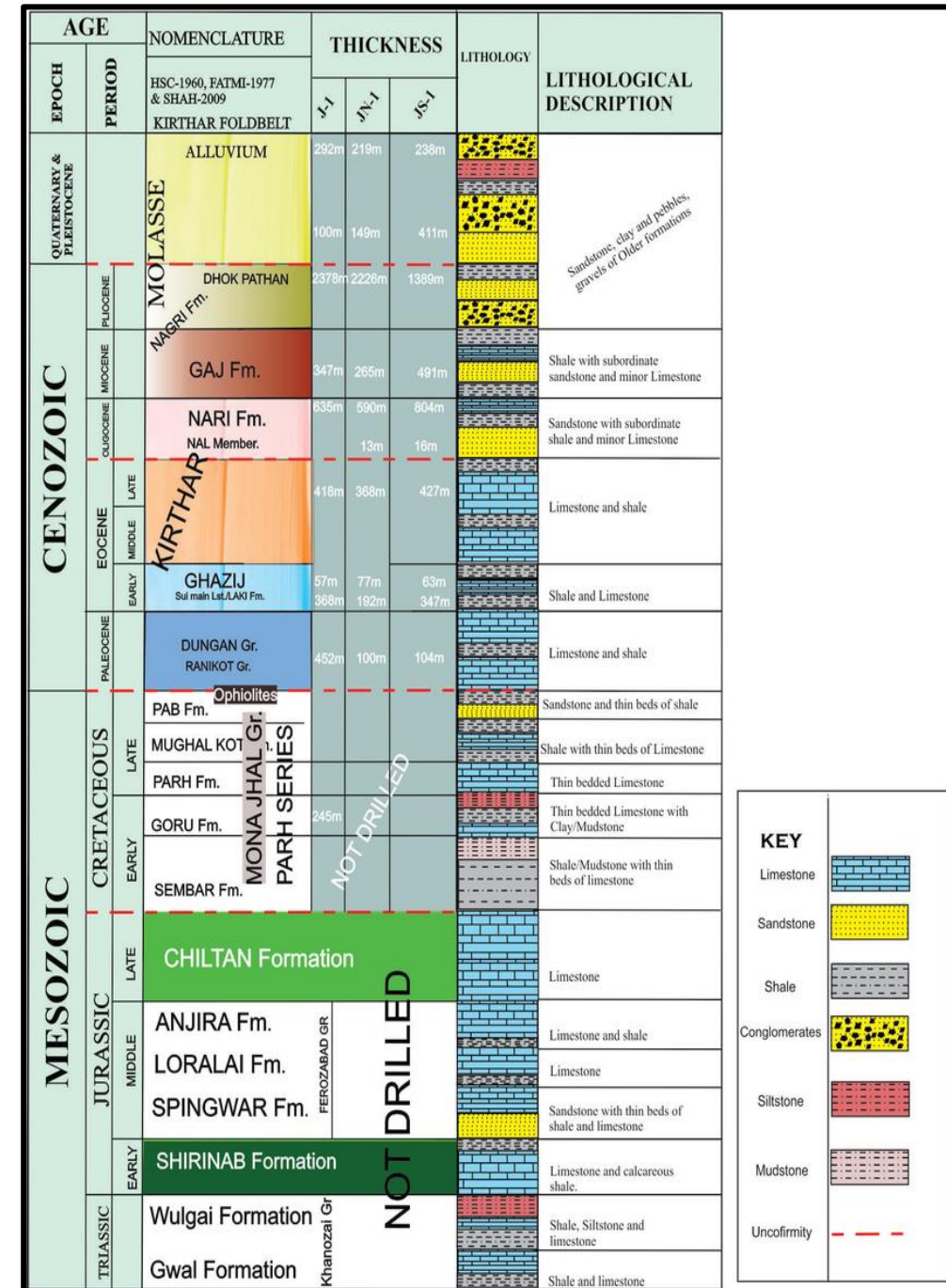
- Mughalkot (Upper Cretaceous), Pab sandstone (Upper Cretaceous), Sui main Limestone (Eocene) and Lower Goru sands (Early Cretaceous) with a porosity of 5 to 30 % act as major reservoir in Lower Indus Basin.

Seal:

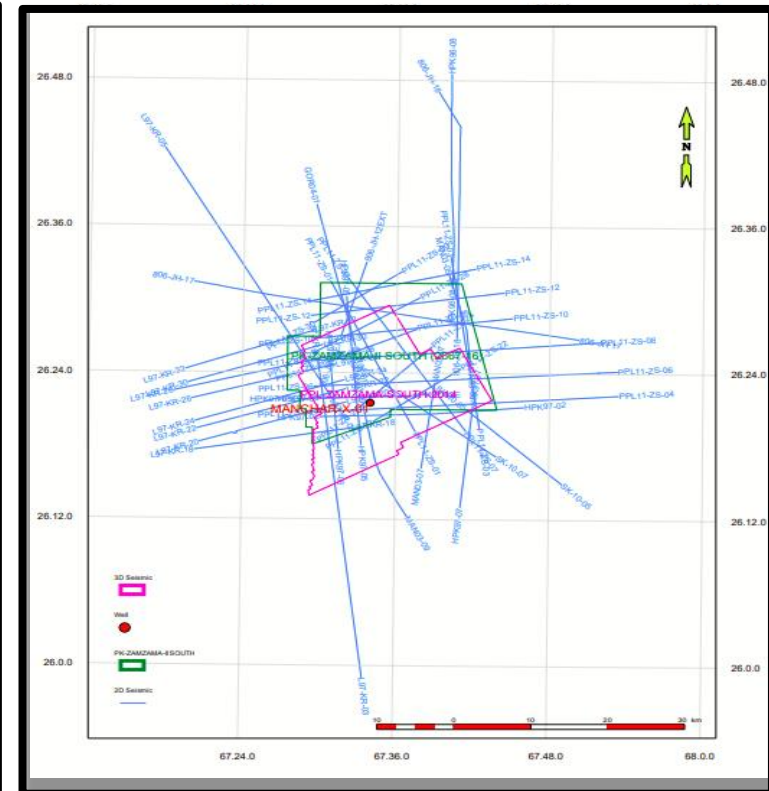
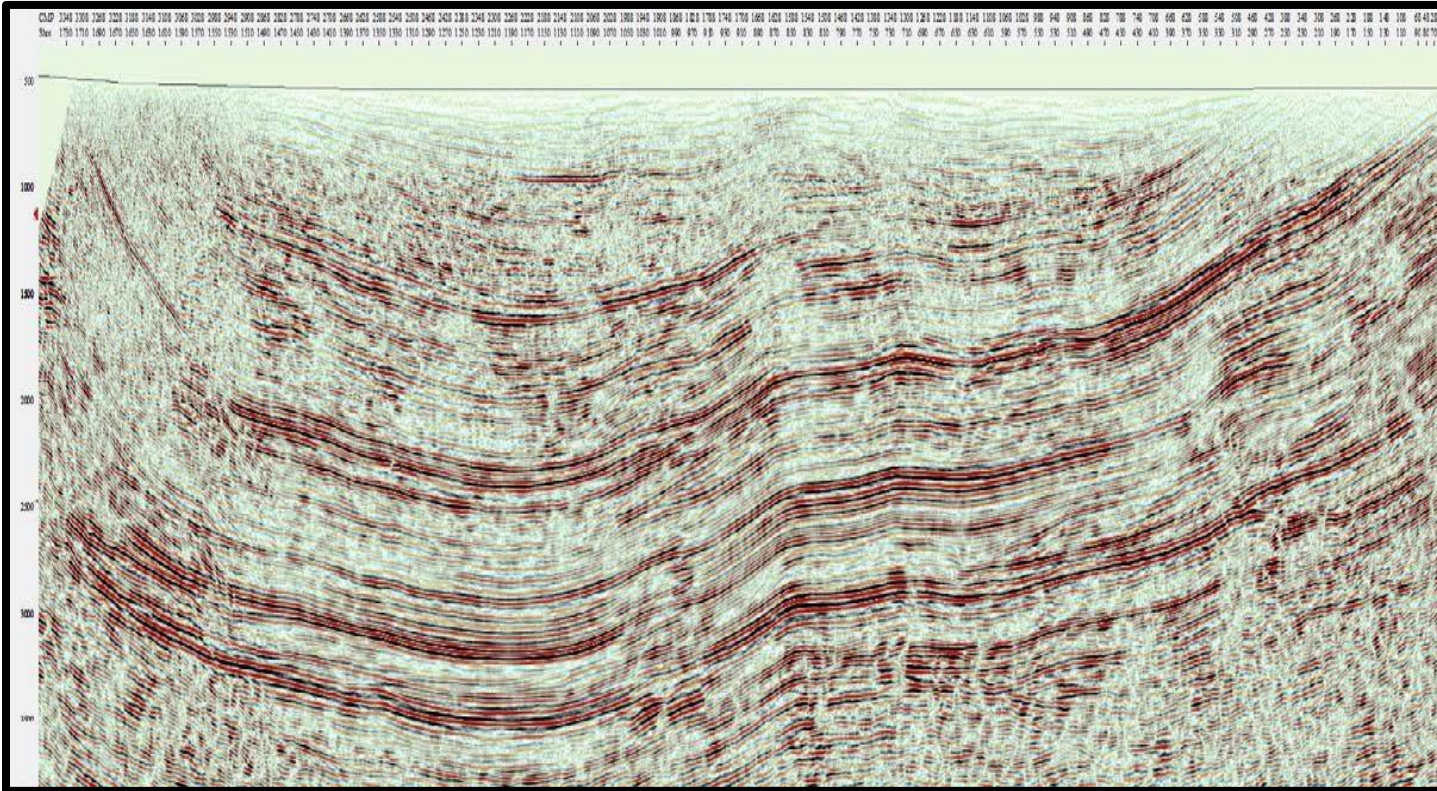
- The Upper Goru marls and Ghazij shales act as seal for major reservoirs.

Trap:

- Anticlinal traps associated with thrust faults are more common in the area.

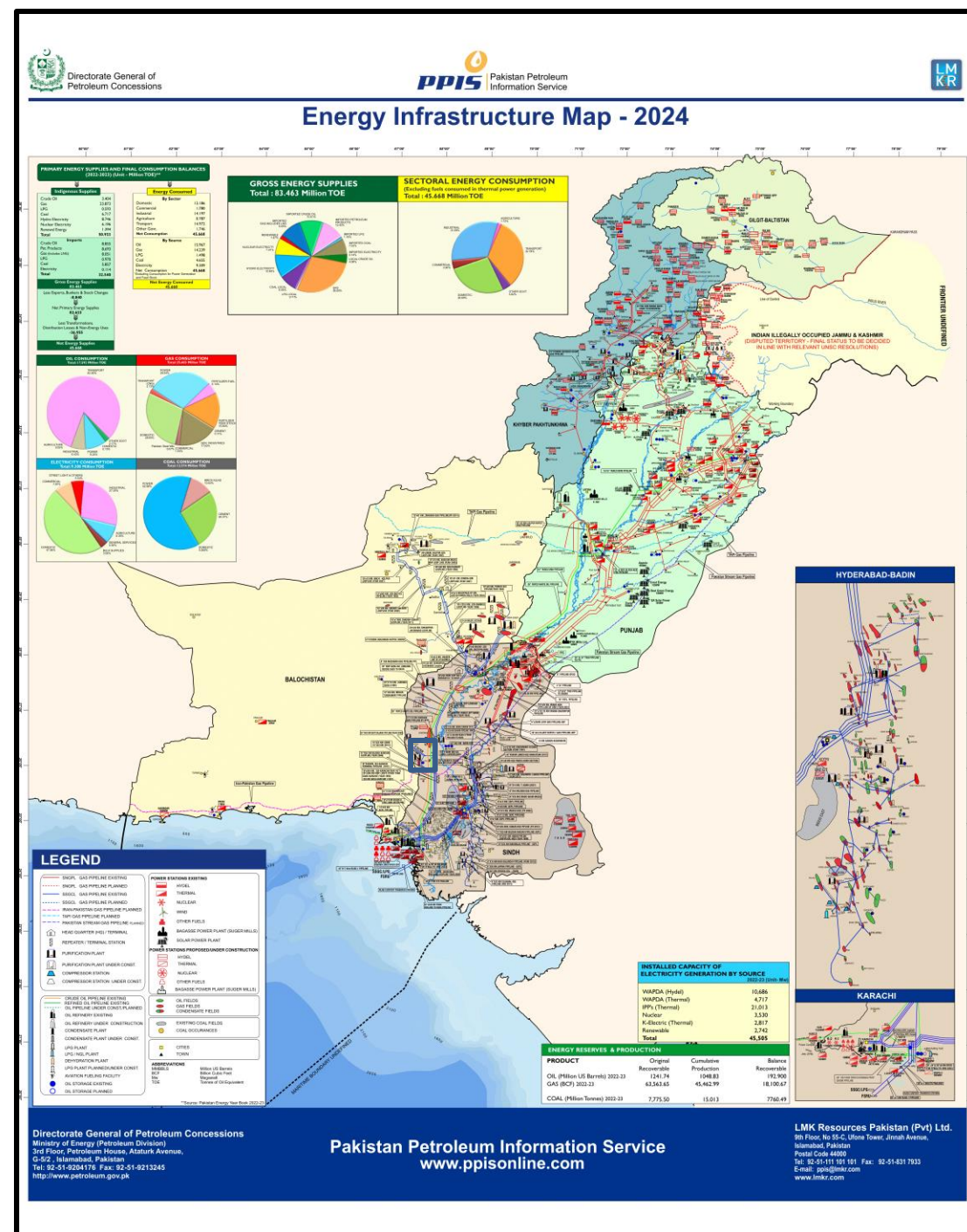


Prospectivity



Infrastructure Map

- Government support to companies for infrastructure development.
- Gas fields exist near the block.
- Thermal power plant exist near the block.
- Purification plant exist near the block.



Investment Benefits

- Low risk, high reward.
- Prolific gas discoveries throughout basin.
- Low cost on infrastructure development within limited timeframe.
- Return on Investment within 3 years.
- Attractive government policies for foreign investors.
- Excellent purchase rate set by the Government against the discovered commodity.
- Government will guarantee to buy the gas or oil discovered.
- Attractive price in case of tight gas discovery.

Block Summary

Item	Indicators
Probable multiple sources in the region	Positive Indicator
Discoveries in Geological Basin	Positive Indicator
Nearby Infrastructure	Positive Indicator
ROI in 3 Years	Positive Indicator

THANK YOU

