



Smart Solutions for Today's Geoscientist



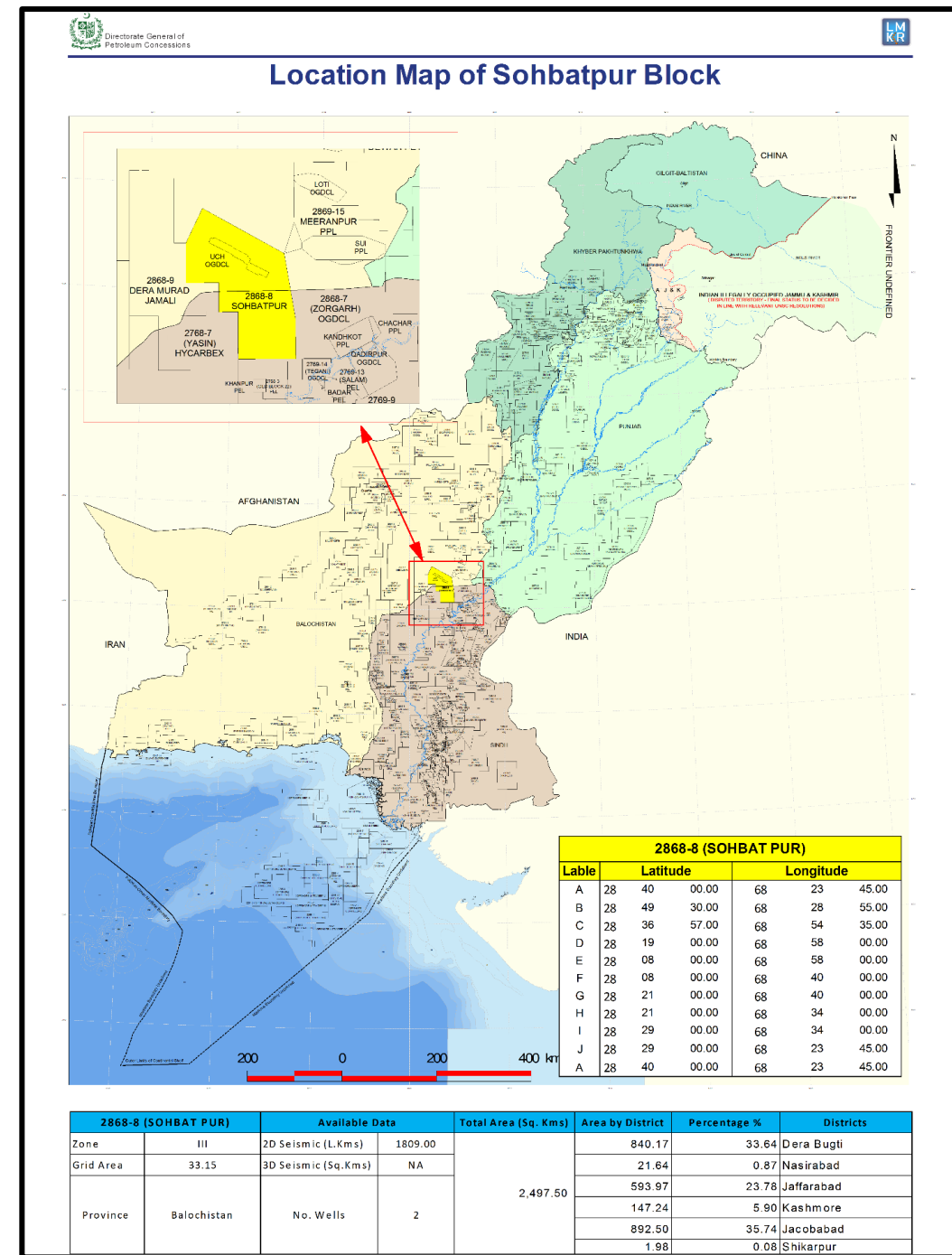
# BLOCK: SOHBAT PUR (2868-8)

ONSHORE BLOCK BIDDING ROUND 2025

MINISTRY OF ENERGY PETROLEUM DIVISION (DGPC)

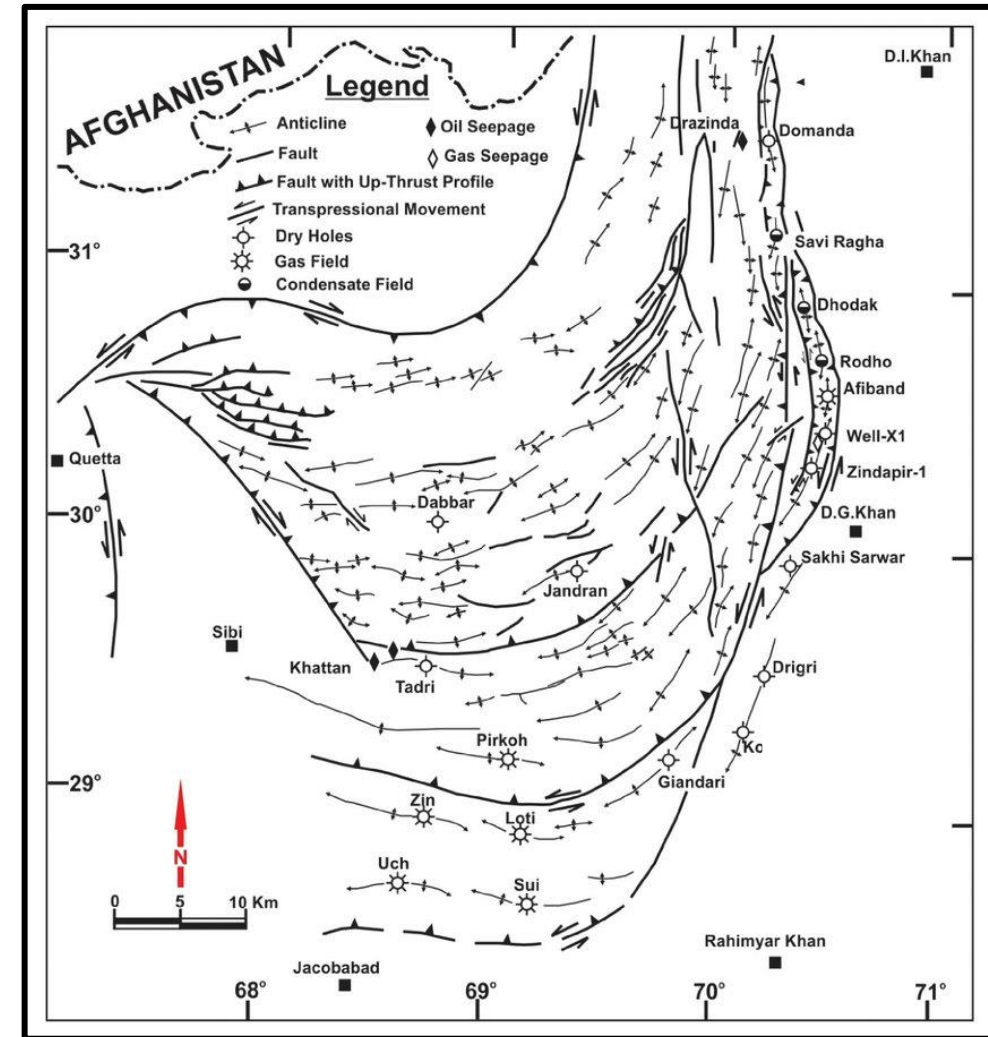
# Introduction

- SOHBAT PUR Block covers an area of 2,497.50 Sq. Kms.
- Location: Dera Bugti, Nasirabad, Jaffarabad, Kashmore, Jacobabad and Shikarpur districts, Pakistan.
- Geological Basin: Suleiman Foldbelt, Pakistan.
- The block falls in Prospectivity Zone III.
- Estimated Resources of the Central Indus Basin:
  - Oil: 2880 million barrels
  - Gas: 69.12 trillion cubic feet
- OMV, HYC, PPL, MGCL, OGDCL, PKP-GHA, AMOCO acquired approximately 1833 L. Kms of 2D seismic data in the block within the years 1975, 1978, 1986, 1989, 1991, 1992, 1995, 1996, 1997, 1999, 2000, 2007, 2015, 2016, 2017 and 2019.
- The Block is surrounded by Zorgharh-II (East), Zin (North), Yasin (West) and Khanpur (South) blocks.
- 42 wells drilled in the vicinity includes UCH Deep-01, UCH Deep-1A, UCH-01 etc.



# Geological Map

- Sohbatpur block lies in Southern part of the Sulaiman Foredeep.
- Marwat and Khisore Ranges appear in the north- eastern part of the block.
- Pezu and Bhitanni ranges are in the north of the block.
- Rocks ranging in age from Permian to Recent are exposed in the block.
- The oldest rocks exposed in the north-eastern part of the block are Amb and Wargal Formations of Permian age.



# Petroleum System

## Source Rocks:

- Sembar Formation (Cretaceous) and Intra-Formational Shale units are the source rocks in the area.

## Reservoirs:

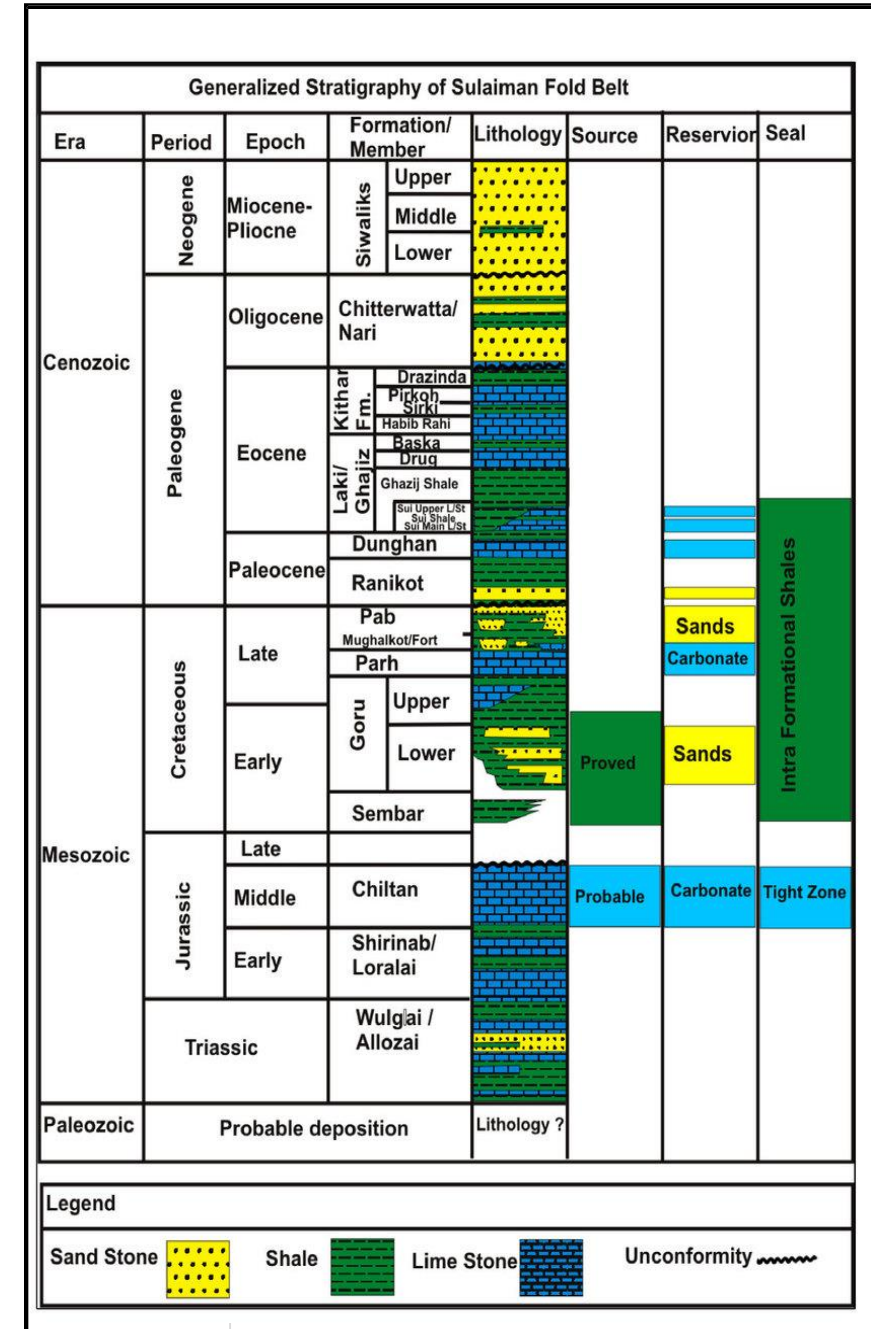
- Pirkoh (Late Eocene), Habib Rahi (Middle Eocene), Sui main Limestone (Eocene) and first three sand intervals of Lower Goru Formation (Early Cretaceous) are reservoirs of the area.

## Seal:

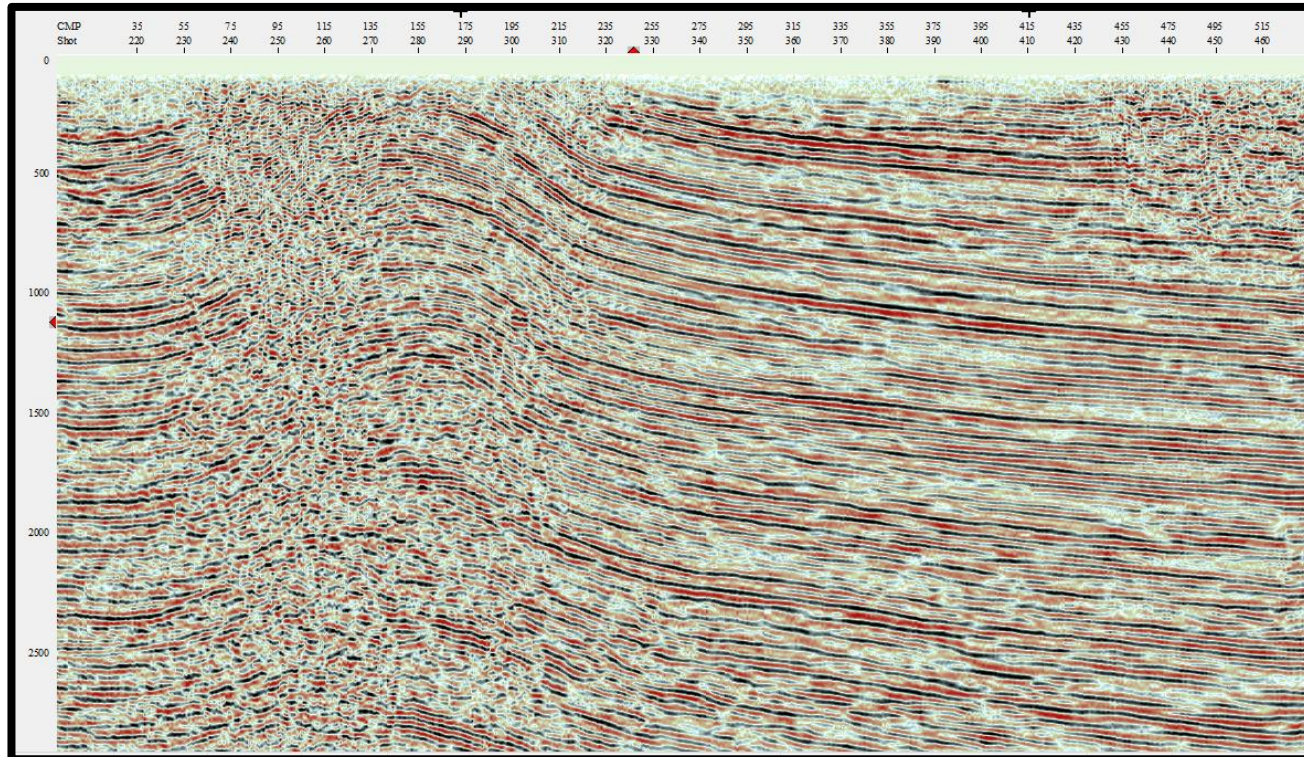
- Upper Goru Formation (Cretaceous), Ghazij Shale (Eocene) along with Sirki Shale (Eocene) acts as a seal.

## Trap:

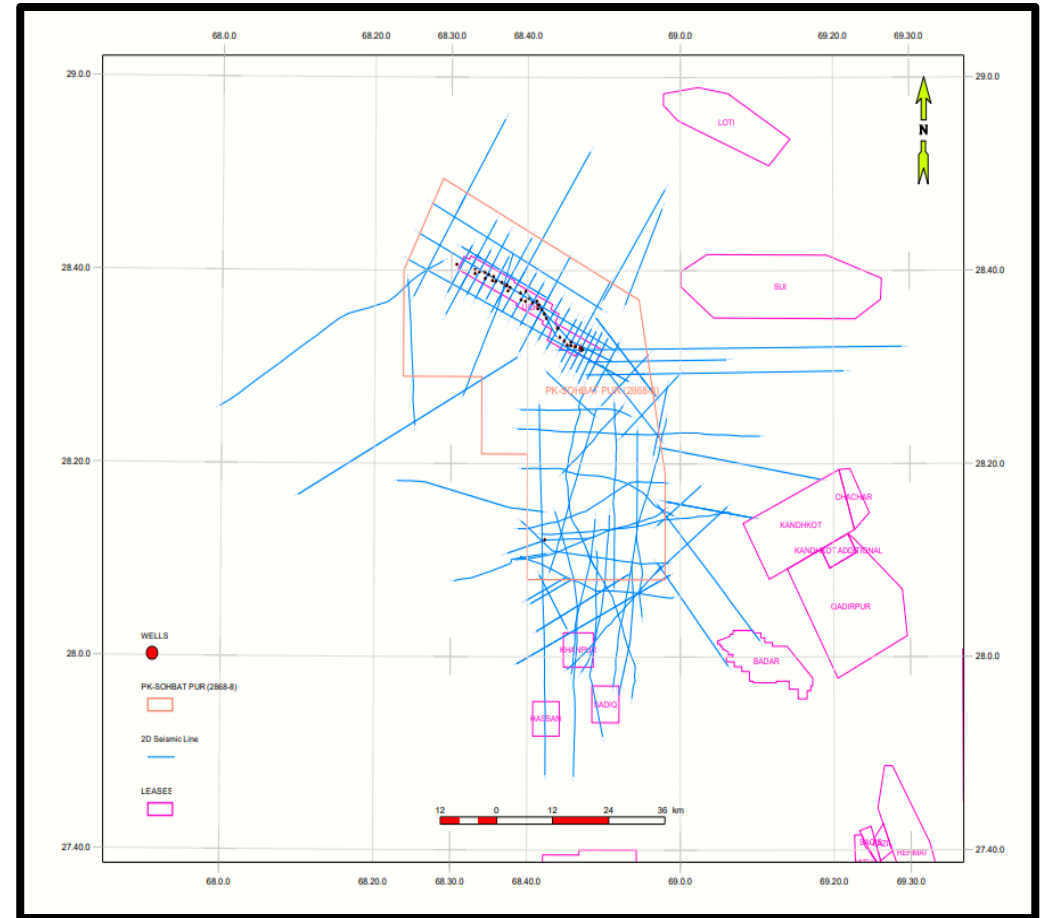
- Fault bounded anticlinal traps are present in the area.



# Prospectivity

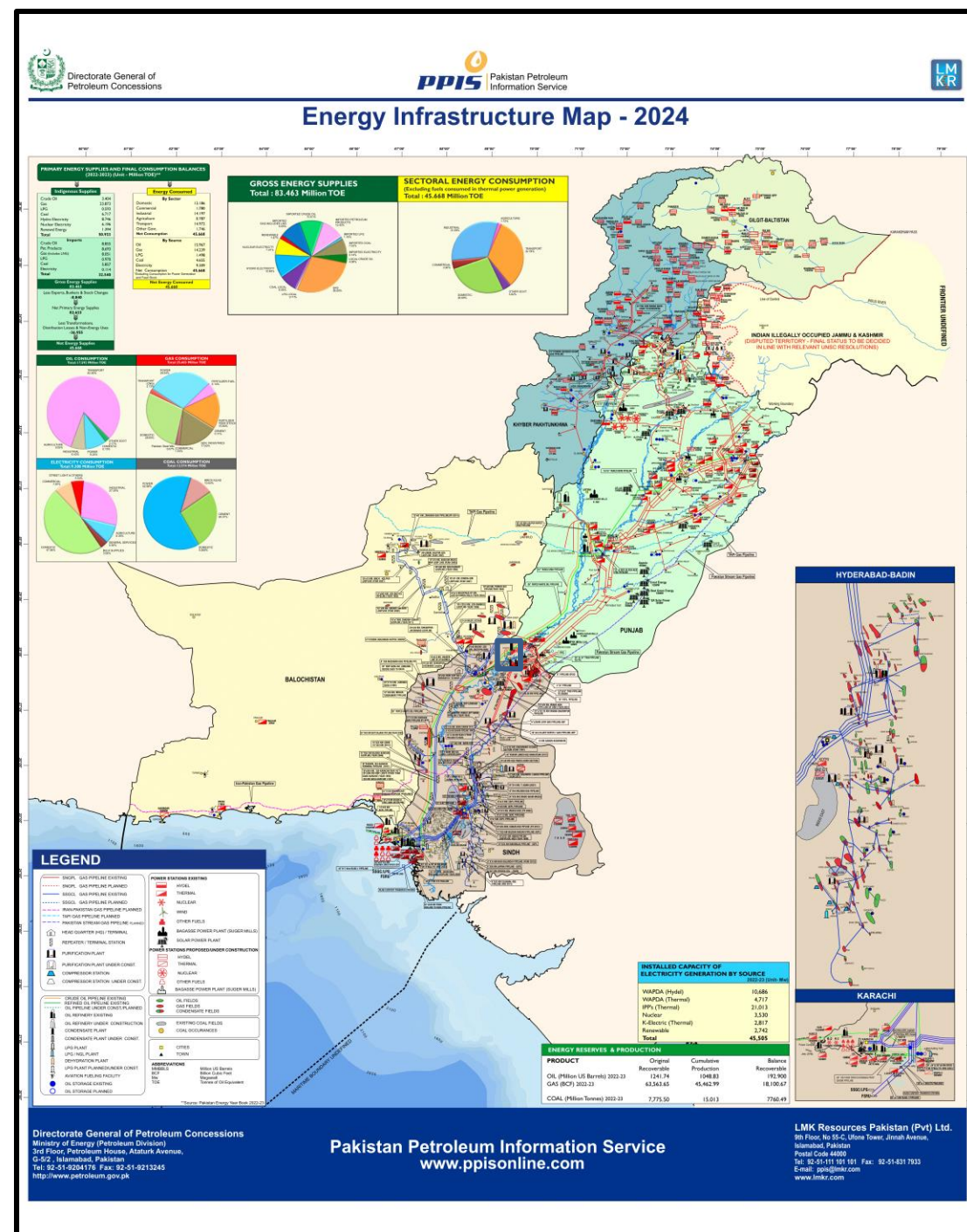


- The main trapping mechanism in this area is pinch out as revealed by seismic and anticlinorium structural feature.
- Nearby Blocks shows successful gas discoveries.
- High Resolution seismic section reveals the stratigraphic and structural features.



# Infrastructure Map

- Government support to companies for infrastructure development.
- Gas fields exist near the block.
- SSGCL gas pipeline exists within the block.
- Purification plant exists within the block.
- Thermal power plant exists near the block.
- Oil storage exist near the block.



# Investment Benefits

---

- Low risk, high reward.
- Prolific gas discovery in the basin.
- High cost on infrastructure development within limited timeframe.
- Return on Investment within 3 years.
- Attractive government policies for foreign investors.
- Excellent purchase rate set by the Government against the discovered commodity.
- Government will guarantee to buy the gas or oil discovered.
- Attractive price in case of tight gas discovery.

# Block Summary

Item	Indicators
Probable multiple sources in the region	Positive Indicator
Discoveries in Geological Basin	Positive Indicator
Nearby Infrastructure	Positive Indicator
ROI in 3 Years	Positive Indicator



# THANK YOU

---

