



Smart Solutions for Today's Geoscientist



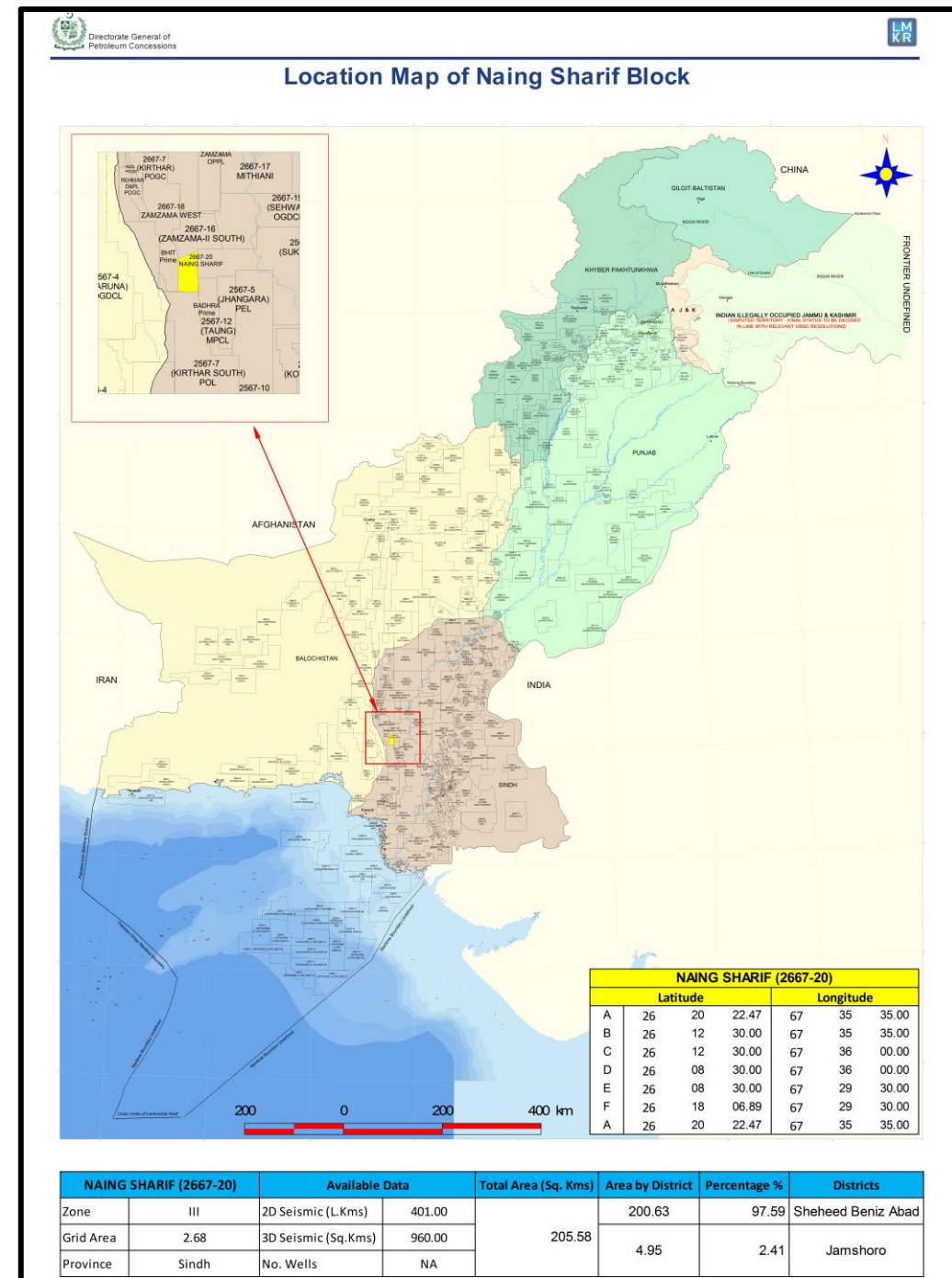
BLOCK: NAING SHARIF (2667-20)

ONSHORE BLOCK BIDDING ROUND 2025

MINISTRY OF ENERGY PETROLEUM DIVISION (DGPC)

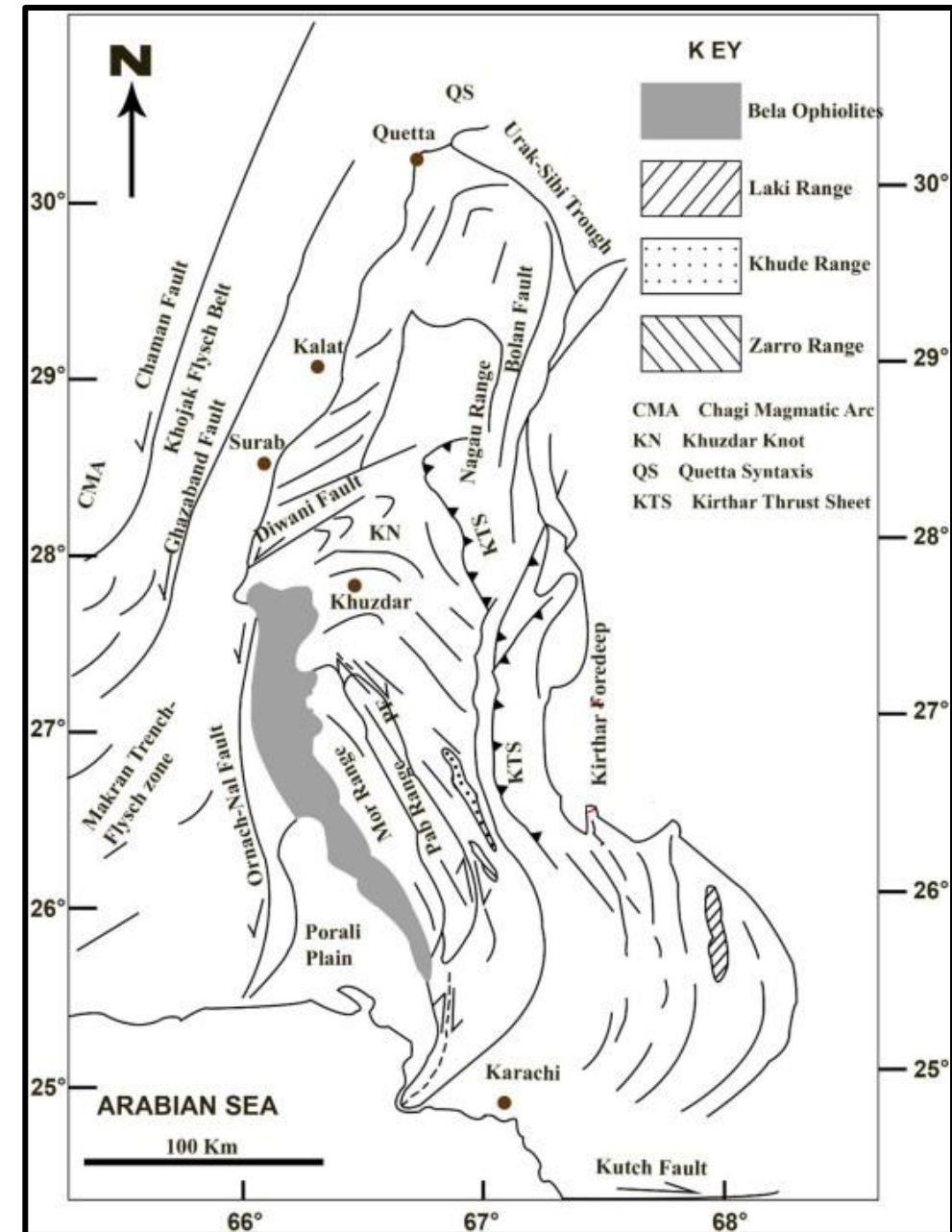
Introduction

- Naing Sharif Block covers an area of 205.58 Sq. Kms.
- Location: Shaheed Benazir Abad and Jamshoro districts, Sindh, Pakistan.
- Geological Basin: Kirthar Foldbelt, Pakistan.
- The block falls in Prospectivity Zone III.
- Estimated Resources of the Lower Indus Basin:
 - Oil: 4740 million barrels
 - Gas: 64.75 trillion cubic feet
- LASMO, BHP, PPL and ENI acquired some 2D data approximately 401.33 L. Kms and 960 Sq.km 3D in the block within the years 1997, 2001, 2003 2006, 2010 and 2014.
- The Block is surrounded by Zamzama-II South (North), Badhra (South-East) and Sukhpur-II (West) blocks.



Geological Map

- The collision of Indian and Eurasian plates resulted in the creation of north–south trending Kirthar Fold Belt (KFB) in the Southern Indus Basin.
- The basin is comprised of five structural elements units, i.e., Kirthar Fold Belt, Kirthar Foredeep, Karachi Trough, Thar Platform, and Offshore Indus.
- The present study area belongs to the eastern portion of Kirthar Foredeep, which is located between the Kirthar Foldbelt and Thar Platform.
- In the north of Kirthar Foredeep, Jacobabad Mari Kandkot high is present. It is bounded in the south by the Hyderabad high and in the east by the Tharpakar high in the west by KFB Bela Ophiolite.



Petroleum System

Source Rock:

- The Cretaceous Sembar shale are considered to be the main source rock in this area.

Reservoir Rock:

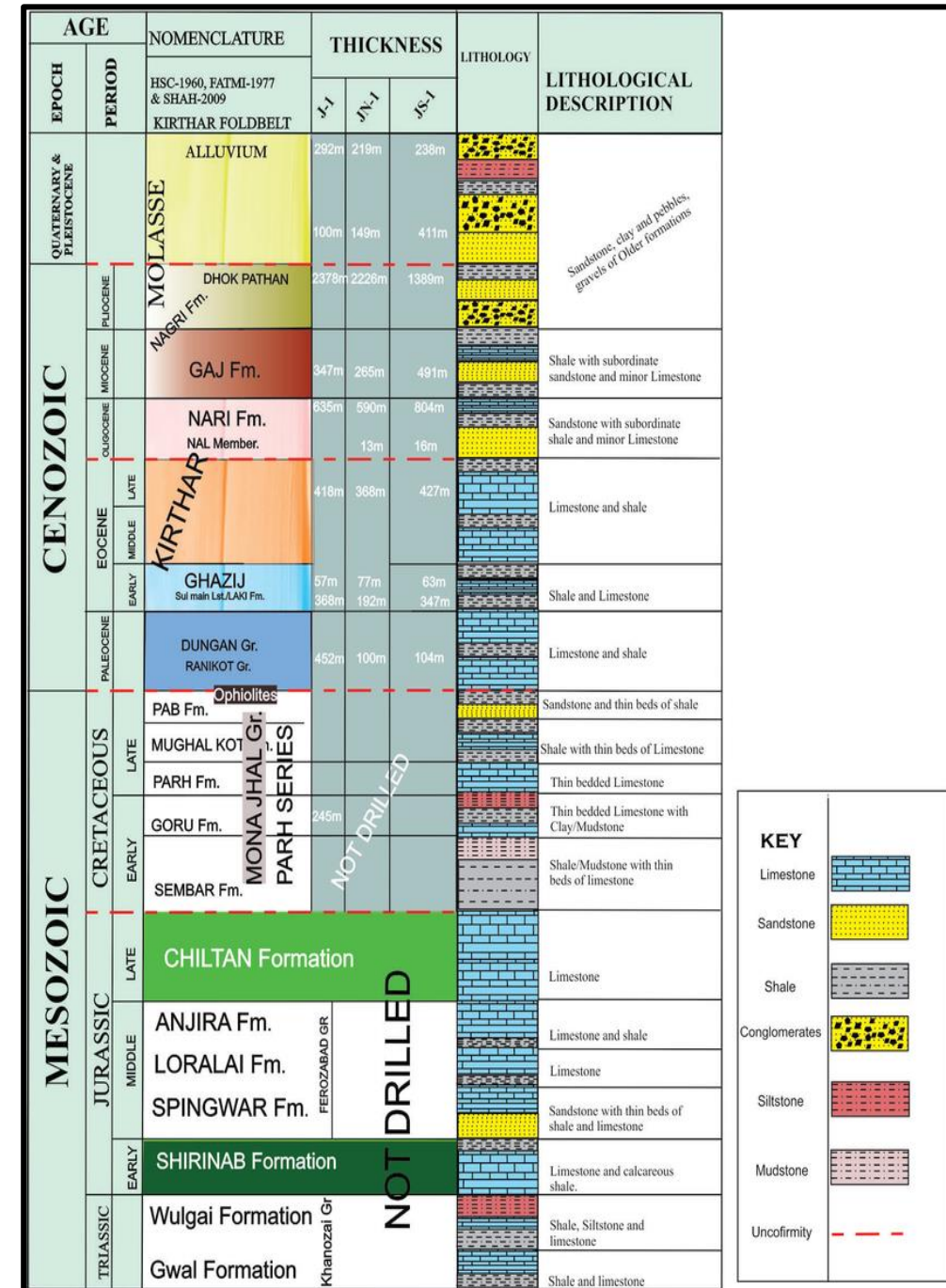
- Mughalkot (Upper Cretaceous), Pab sandstone (Upper Cretaceous), Sui main Limestone (Eocene) and Lower Goru sands (Early Cretaceous) with a porosity of 5 to 30 % act as major reservoir in Lower Indus Basin.

Seal:

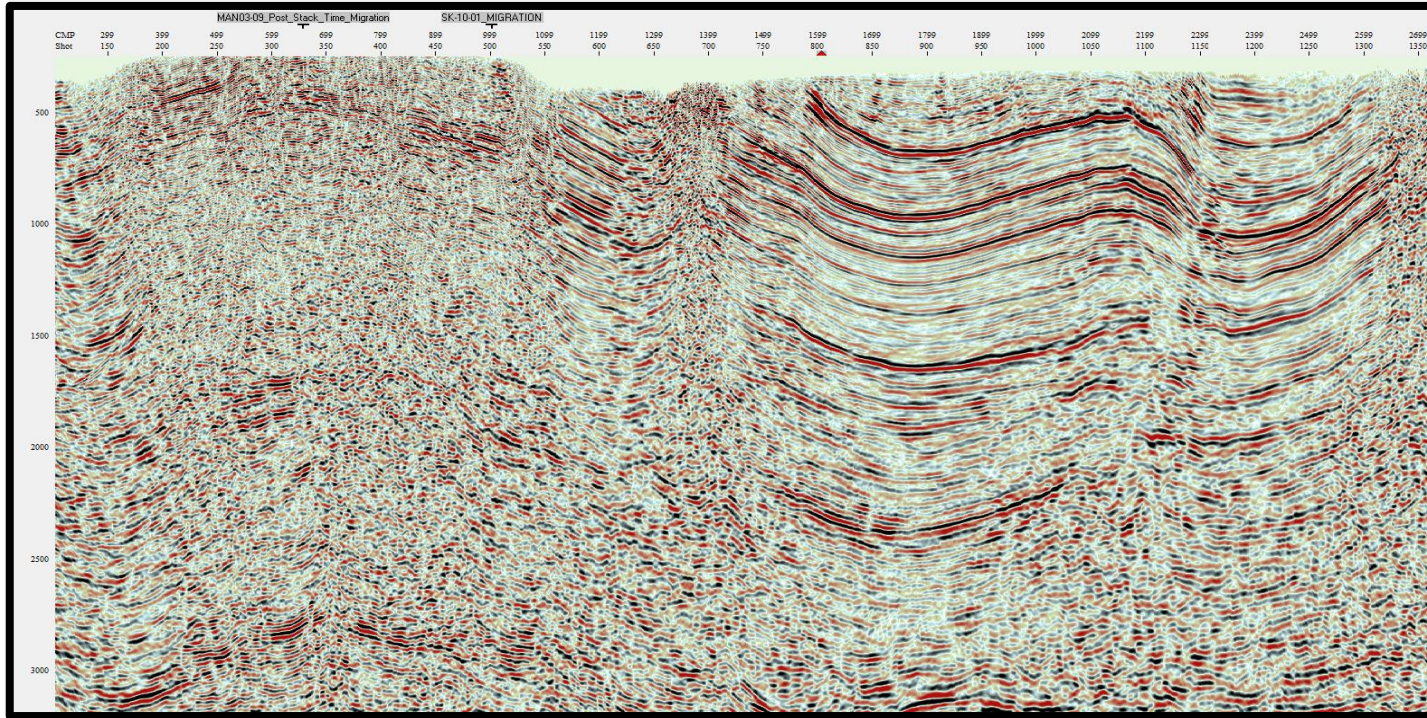
- The Upper Goru marls and Ghazij shales act as seal for major reservoirs.

Trap:

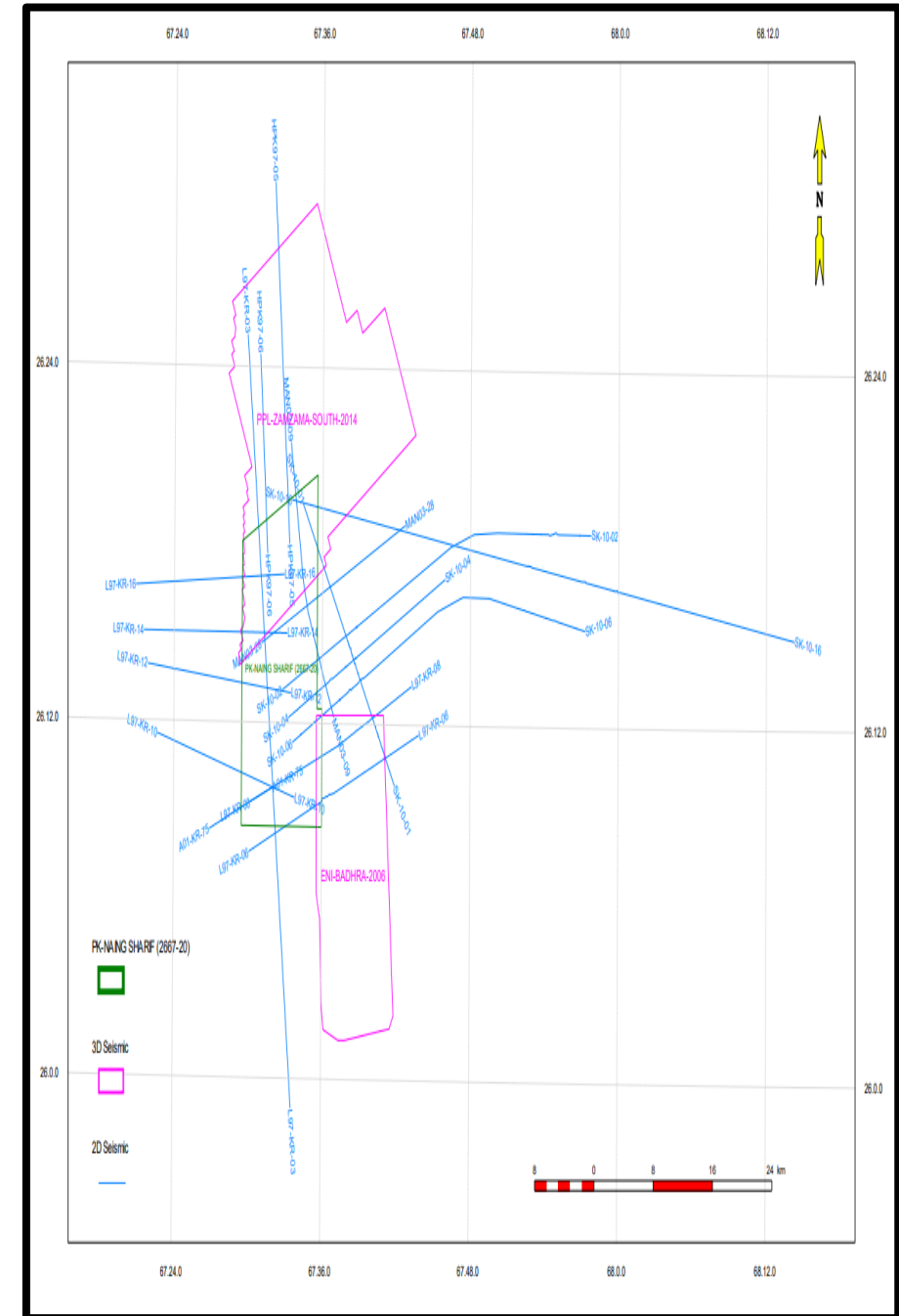
- Anticlinal traps associated with thrust faults are more common in the area.



Prospectivity

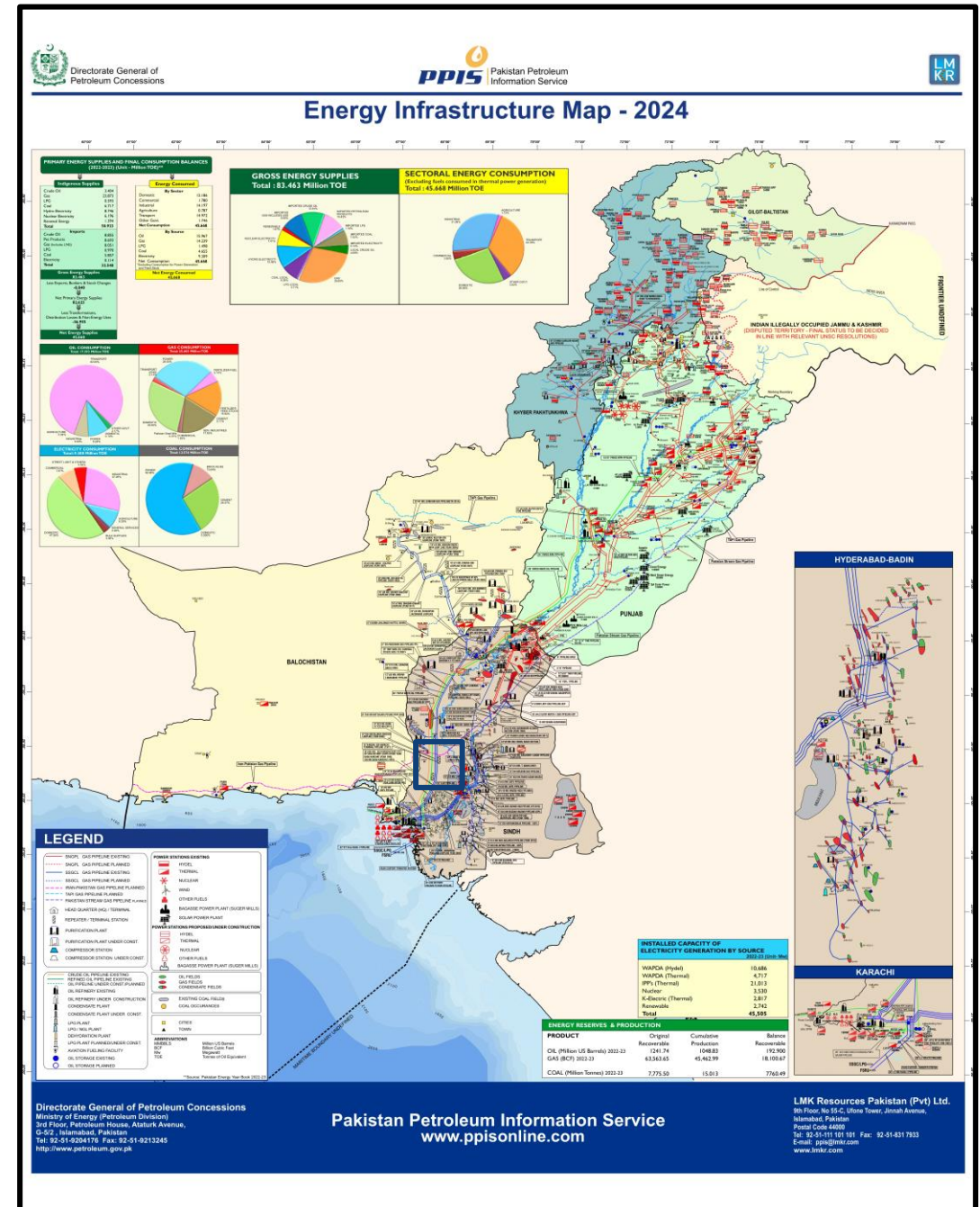


- The main trapping mechanism in this area is considered to be anticlinal structure associated with thrust faults.
- In recent past, nearby blocks have successful gas discoveries
- High resolution seismic data can allow to delineate true potential of the block.



Infrastructure Map

- Government support to companies for infrastructure development.
- Gas fields exist near the block.
- Thermal power stations exist near the block.



Investment Benefits

- Low risk, high reward.
- Prolific gas discoveries throughout basin.
- Low cost on infrastructure development within limited timeframe.
- Return on Investment within 3 years.
- Attractive government policies for foreign investors.
- Excellent purchase rate set by the Government against the discovered commodity.
- Government will guarantee to buy the gas or oil discovered.
- Attractive price in case of tight gas discovery.

Block Summary

Item	Indicators
Probable multiple sources in the region	Positive Indicator
Discoveries in Geographical Province	Positive Indicator
Nearby Infrastructure	Positive Indicator
ROI in 3 Years	Positive Indicator

THANK YOU

