

OFFSHORE PAKISTAN

The New Exploration Frontier

Bid Round Blocks



INDEX

Attractive Fiscal and Regulatory Policy for Petroleum Investors	3
Procedure for Grant of E&P Rights and Requirements	4
Road Map Bid Award Process	5
Exploration History	6
Offshore Data Set	7
Geological Perspective	8
Geology & Tectonic Settings	9
Generalized Stratigraphy	10
Source Rock Correlations: Indus Basin & Adjacent Areas	11
Reservoir Correlations: Indus & Adjacent Areas	12
Indus Offshore Block: Kochi Creek (2366-8)	13
Indus Offshore Block Deep K (2465-6)	20
Indus Offshore Block Ultra Deep C (2166-1)	28

ATTRACTIVE FISCAL AND REGULATORY POLICY FOR PETROLEUM INVESTORS

Sliding scale production sharing arrangement.	Foreign investment is fully protected under foreign investment protection law.	G2G arrangement for foreign state-owned companies.	Guarantee of Government to buy gas.
Right to remit funds.	Payments in USD.	Transferrable work units.	Royalties treated as expense for tax.
Only 5% tax on equipment.	No ring fencing.	Tenure of license/lease.	Option to sell to 3rd party.

Separate Policies for Tight Gas (upto \$12.6/MMBTU).

95%

**PROFIT OIL/
GAS UPTO**

85%

**COST
RECOVERY**

\$7 – \$9

**GAS PRICE
USD/MMBTU**

4 YRS

**HOLIDAY ON
ROYALTY**

Bonanza of US\$ 1/MMBTU over and above well head gas price for first three offshore discoveries

PROCEDURE FOR GRANT OF E&P RIGHTS AND REQUIREMENTS

Competitive Bidding

Petroleum Exploration License for entering PCA or PSA

G to G

Petroleum Exploration License for entering PCA or PSA to Strategic Partner Companies

Direct Negotiation

Non-exclusive Reconnaissance Permits for undertaking studies and multi-client surveys

Road Map BID AWARD PROCESS



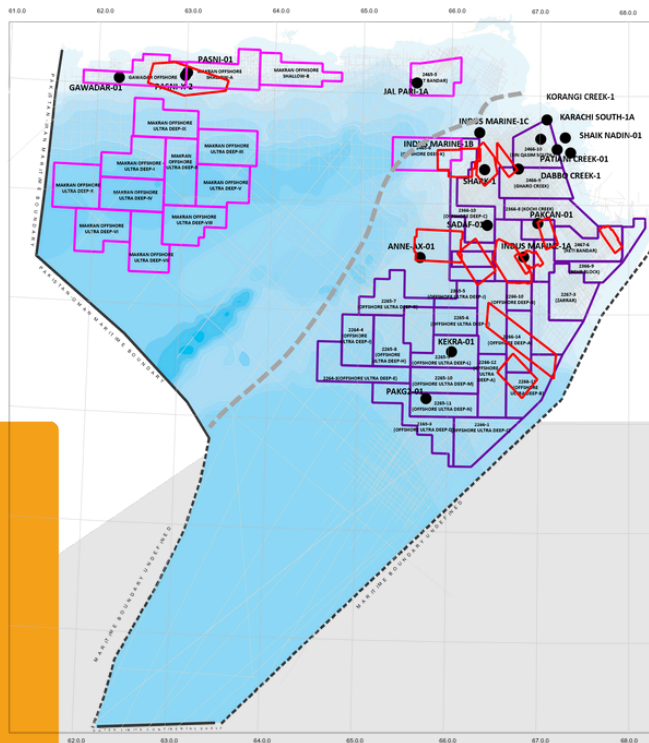
Bid Announcement

April 2025

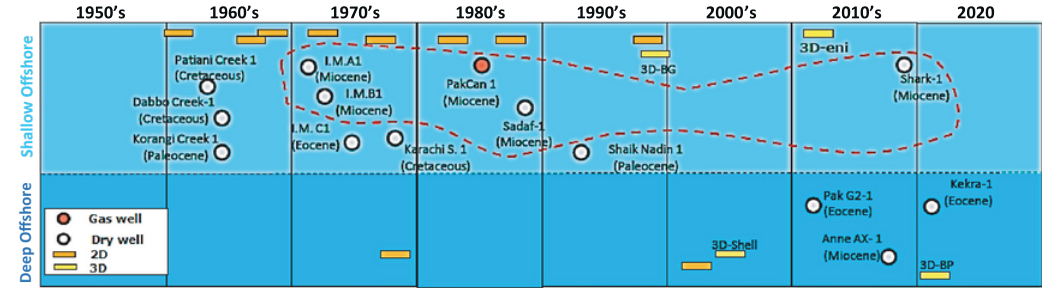
January 2025

Bid Submission & Award

Upcoming Offshore Bidding Blocks			
Sr.	Blocks	Area Sq.Kms	Grid Area
1	2466-10 Bin Qasim South	2021.69	26.00
2	2266-12 Offshore Ultra Deep- A	2055.49	25.87
3	2266-13 Offshore Ultra Deep- B	2451.61	30.85
4	2166-1 Offshore Ultra Deep- C	2475.04	31.01
5	2165-3 Offshore Ultra Deep- D	2444.86	30.63
6	2264-3 Offshore Ultra Deep- E	2429.76	30.44
7	2265-6 Offshore Ultra Deep- F	1373.56	17.36
8	2265-7 Offshore Ultra Deep- G	2048.36	26.00
9	2265-8 Offshore Ultra Deep- H	1976.92	24.98
10	2264-4 Offshore Ultra Deep- I	1858.69	23.50
11	2365-5 Offshore Ultra Deep- J	900.36	11.40
12	2465-6 Offshore Deep- K	2482.33	31.80
13	2266-14 Offshore Deep- A	1774.2	22.33
14	2266-10 Offshore Deep- B	833.78	10.56
15	2366-10 Offshore Deep- C	2482.83	31.69
16	2366-8 Kachi Creek	2450.14	31.32
17	2367-6 Keti Bandar	2464.75	31.47
18	2366-9 Behr Block	2481.44	31.62
19	2267-3 Zarrar	2424.8	30.74
20	2466-9 Ghoro Creek	2453.05	31.49
21	2265-9 Offshore Ultra Deep- L	2087.59	27.83
22	2265-10 Offshore Ultra Deep- M	1999.10	26.65
23	2265-11 Offshore Ultra Deep- N	1860.21	24.80
24	2465-5 Sapat Bandar	1894.66	24.49
25	2461-5 Gawadar Offshore	2499.05	32.00
26	2462-2 (Makran Offshore Shallow-A)	2479.90	32.19
27	2464-5 (Makran Offshore Shallow-B)	2115.16	27.33
28	2462-3 (Makran Offshore Ultra Deep-I)	2498.72	32.11
29	2362-2 (Makran Offshore Ultra Deep-II)	2487.54	31.90
30	2463-1 (Makran Offshore Ultra Deep-III)	2425.26	31.14
31	2362-1 (Makran Offshore Ultra Deep-IV)	2403.52	30.75
32	2363-1 (Makran Offshore Ultra Deep-V)	2460.41	31.50
33	2361-2 (Makran Offshore Ultra Deep-VI)	2372.93	30.24
34	2362-4 (Makran Offshore Ultra Deep-VII)	2491.60	31.74
35	2362-3 (Makran Offshore Ultra Deep-VIII)	2384.24	30.43
36	2462-4 (Makran Offshore Ultra Deep-IX)	2418.22	31.11
37	2361-1 (Makran Offshore Ultra Deep-X)	2369.38	30.32
38	2366-11 (Offshore Deep-D)	2495.57	31.80
39	2266-15 (Offshore Deep-E)	2440.87	30.91
40	2366-12 (Offshore Deep-F)	2455.08	31.27



Exploration HISTORY



Acquired Data

2D Seismic	75,000 L. Kms
3D Seismic	~11,000 Sq. Kms

Drilled Wells

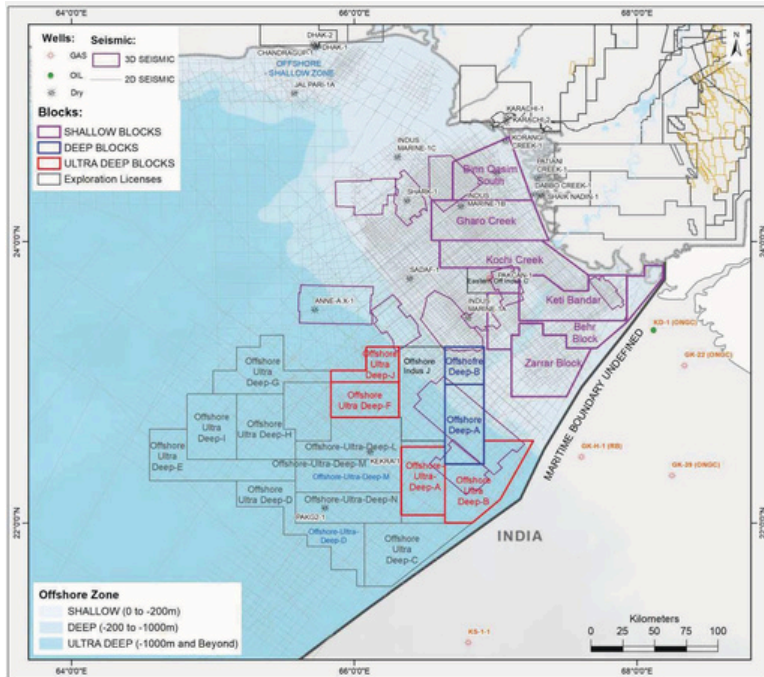
Sr	Well Name	Well Results	Operator	Year	TD (meters)
1	Pak Can-1	Discovery, drilled probably at edge of sand body	OGDCL	1985	3702
2	Dabbo Creek-1	Drilled off structure	Sun	1963	4354
3	Patiani Creek-1	Drilled off structure	Sun	1964	2659
4	Indus Marine 1C	High formation pressure	Wintershall	1975	1942
5	Sadaf-1	Lack of charge	Occidental	1989	3980
6	Pak G2-1	Lack of charge	Total	2004	4700
7	Kekra-1	Lack of charge	Eni	2019	5693
8	Indus Marine 1A	Poor reservoir quality	Wintershall	1972	2481
9	Shaikh Nadin-1	Poor reservoir quality	Canterbury	1992	1679
10	Anne-Ax-1	Reservoir not encountered	Shell	2007	3257
11	Shark-1	Reservoir not encountered	Eni	2010	3500
12	Karachi South-1	Trap integrity	Husky	1978	3353
13	Indus Marine 1B	Mechanical failure	Wintershall	1972	3804
14	Korangi Creek-1	Possible seal failure	Sun	1964	4140

14 wells have been drilled, 11 in shallow water and 3 in ultra-deep.

5 wells in shallow water and one in deep water was drilled for Miocene clastic play

2 wells in deep water target Paleogene carbonates buildups

OFFSHORE DATA SET



No. of
3D Seismic

12 Surveys

3D
Coverage

287,994
L.kms

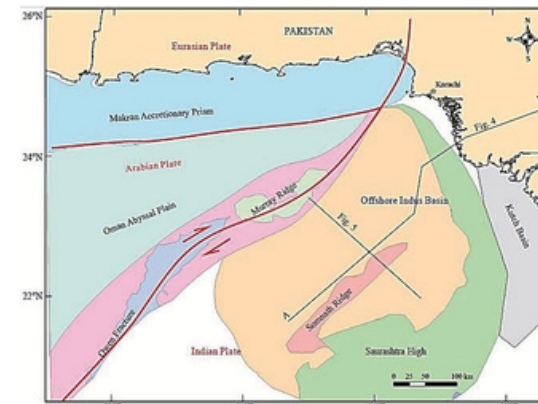
No. of
2D Seismic

40 Surveys

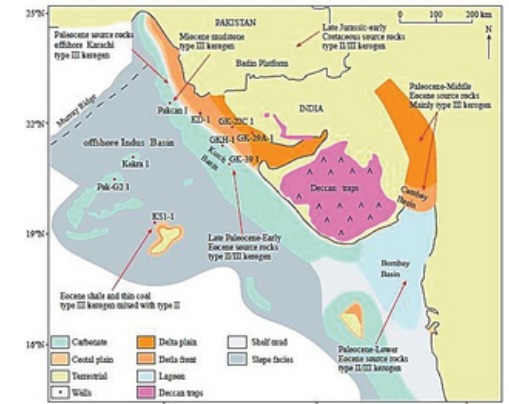
2D
Coverage

67,225
Sq.kms

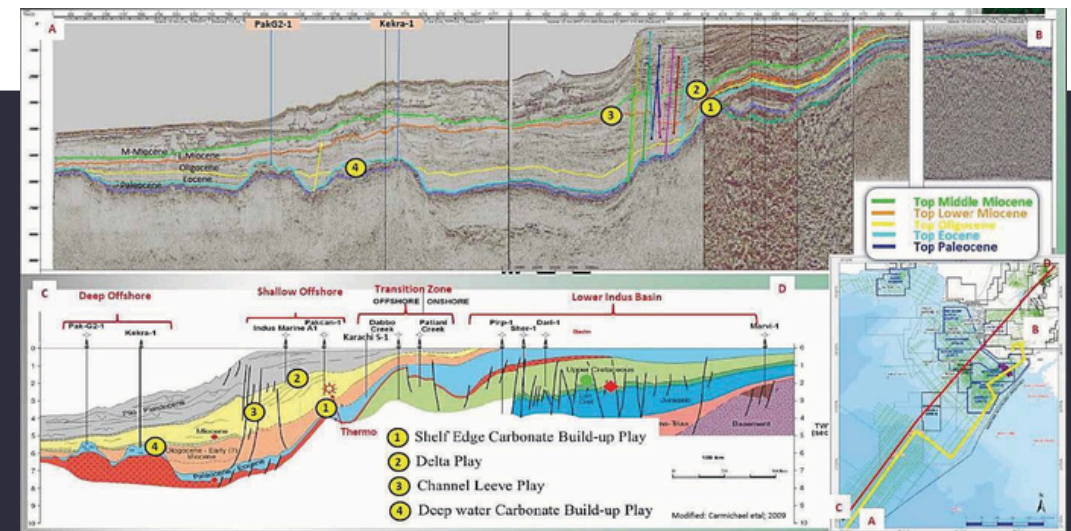
GEOLOGICAL PERSPECTIVE



A - Geotectonic location of Pakistan offshore (modified from Smith GL, 2013).

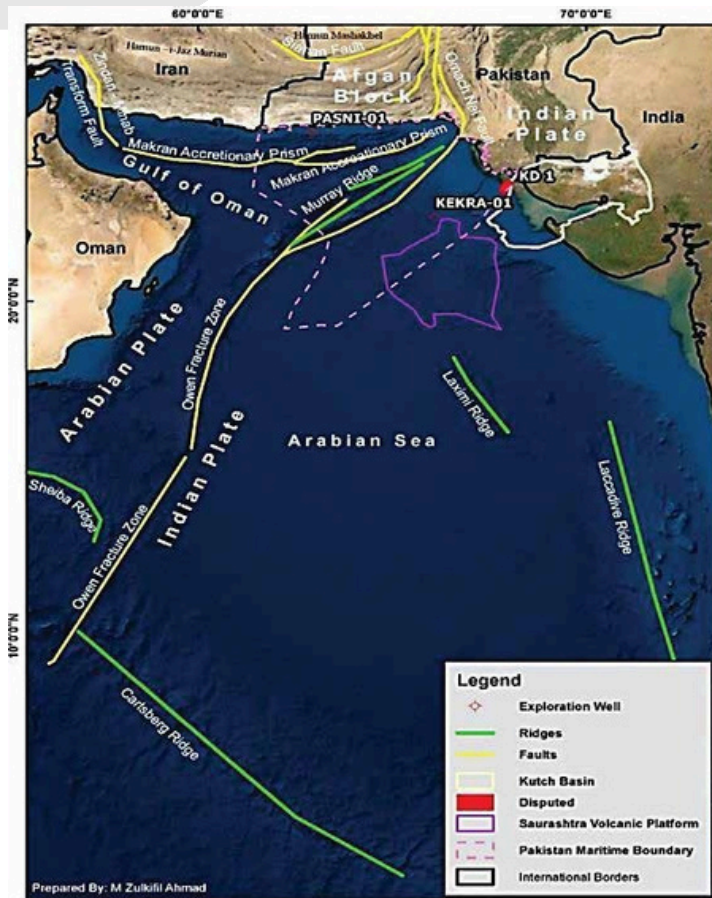


B - Sedimentary environment of source rocks in the Offshore Indus Basin and its adjacent areas in the Paleocene-Eocene



C - Offshore Indus Geological Profile

GEOLOGY & TECTONIC SETTINGS



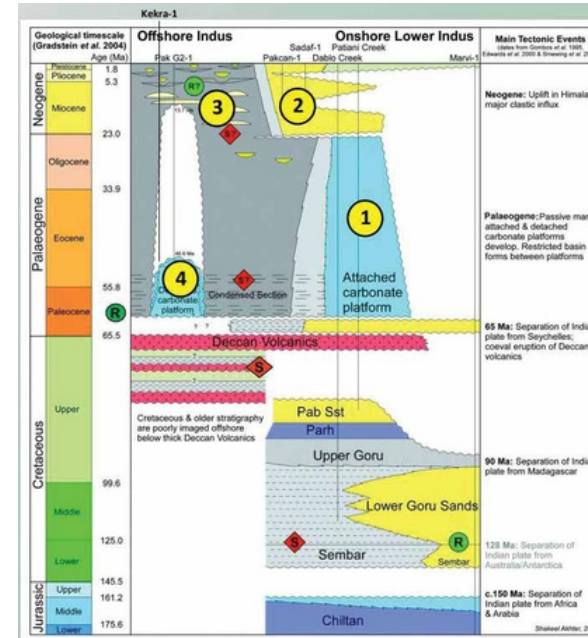
Pakistan Offshore extends from south 700 km long coastal line along Arabian Sea.

Offshore Indus Basin located between Murray Ridge and Laccadive Ridge is mainly a Passive Margin basin."

Arabian Sea extends from border of Oman in west to Laccadive Ridge in east toward India; in South to Carlsberg Ridge. Owen Fracture Zone - Murray Ridge divides Arabian Sea crust into Arabian Plate in west and Indian Plate in east. Pakistan Offshore divided into Indus Offshore (Saurashtra Volcanic Arc in SSE) in east, extend toward west as Murray Ridge, Dalrymple Trough and Makran Accretionary Prism.

Arabian plate is in the south of Makran Accretionary Prism

GENERALIZED STRATIGRAPHY



Source Rock

Paleocene section has TOC ranging from 1-3%.

Miocene section TOC ranges from 1-3.5% in Indus marine a-1.

300m of source rock interval with TOC range of 1- 3.24% drilled in Pakcan-01 well, however it turned out to be immature.

Seal

The Mud-Clay dominated sediments and intraformational shales packages of Miocene and Oligocene may act as seal for potential reservoirs.

1 Shelf Edge
Paleogene Carbonate Buildup. Not drilled yet

2 Miocene Delta
Tested by 5 wells; few were drilled off structure & few didn't encounter reservoirs. Pakcan-01 (flowed @ 3.7 MMscfd)

3 Channel Levees
Untested - Potential candidates for the HC exploration

4 Deep Water Carbonate Buildup
Drilled in Pak G2-01 & Kekra-01; excellent reservoir encountered in the wells however lack of charge could be the possible reason for failure.

SOURCE ROCK CORRELATIONS INDUS BASIN & ADJACENT AREAS

Basin / Well	Age	Lithology	TOC %	Type	R ₀ (%)	Remarks
Indus Basin	Lower Cretaceous	Shale	3.5	II and III	0.87	Proven Hydrocarbon reserves exist with good to very good source rock.
	Upper Cretaceous	Shale / Mudstone	2.55 – 1.72	II and III	2.06 - 1.27	
	Paleocene	Shale	1.38 – 1.72		1.07 – 1.29	
	Eocene	Shale	1.19 – 6.19		1.01 – 1.11	
	Oligocene	Shale	9.75		1.44	
Kutch Basin	Lower Eocene	Shale / Lagoonal Lignite	0.86	II and III	0.94	Proven GKH1 well. In Cretaceous thin layers are observed.
	Paleocene	Calcareous Shale / Lignite Seams	0.58 – 0.37	II and III	>1.1	
	Cretaceous	Interbedded Shale and Coal	0.35 - 3	III and II	<0.5	
	Upper Jurassic	Shale	0.1 – 10.65	III and II	0.34 – 0.49	
	Lower Cretaceous	Shale	0.5 – 3			
Pakcan-1	Lower Miocene	Mudstones	0.55 – 3.24		0.6 – 0.9	Potential source rock is present.
Bombay Basin	Paleocene – Lower Eocene	Shale / Coal Seams	0.55-1			Good and mature source rock.
	Oligocene	Shale	≥1			
KS1-1	Paleocene – Eocene	Shale / Mudstones	3-4.5	III		Black Shale (~3m)
Karachi Offshore	Paleocene	Mudstone		III		Good source rock.

Modified after Gong, J. M., Liao, J., Liang, J., Lei, B. H., Chen, J. W., Khalid, M., & Meng, M. (2020). Exploration prospects of oil and gas in the North-western part of the Offshore Indus Basin, Pakistan. China Geology, 3(4), 633-642.

Paleocene

Drilled only in Karachi South-01 well with TOC ranging from 1 -3%. Pakcan-01 adjacent block.

Miocene

TOC ranges from 1% - 3.5% in Indus Marine A-1

300m of source rock interval with TOC range of 1.26% - 3.24% drilled in Pakcan-01 well, however it turned out to be immature.

RESERVOIR CORRELATIONS INDUS & ADJACENT AREAS

Basin / Well	Age	Lithology	Net Thickness(m)	Phi (v/v)	K (md)	Remarks
Offshore Indus Basin	Miocene	Deltaic Sands	10-20	18-25, with an average of 22	100-500, with an average of 514	Pakcan-01 Good reservoir is present
	Eocene	Reef Limestone				PakG2-01 Excellent reservoir
	Eocene	Reef Limestone		20-28		Kekra-01 Excellent reservoir
Indus Basin	Lower Eocene	Limestone	25	4-30	4	Excellent reservoir
	Paleocene	Sandstones	10	10-25		Good reservoir
	Cretaceous	Sandstones	15	15-22		Excellent reservoir
Kutch Basin	Cretaceous Naliya & Bhuj Formations	Fluvial-Deltaic Sands	30	25 18	32.8	GK-39-1 Very good reservoir GK-22C-1
	Lower Paleocene	Fluvial Sands		20-25	100-1000	GK-29A-1 Excellent reservoir
	Lower Eocene	Limestone	15			KD-1 (Good reservoir)
						Good to very good reservoir
Bombay Basin	Miocene	Limestone		18-35	50-500	
	Upper Eocene	Limestone		14-22	20-1000	

Modified after Gong, J. M., Liao, J., Liang, J., Lei, B. H., Chen, J. W., Khalid, M., & Meng, M. (2020). Exploration prospects of oil and gas in the North-western part of the Offshore Indus Basin, Pakistan. China Geology, 3(4), 633-642.

Plays Types

Shelf Edge Carbonate Buildup

Undrilled

Seal

Intra-formational shales of Miocene and Oligocene may act as top seal.

Miocene Delta

Tested by 5 wells, few were off structure & some didn't land in reservoir
Pakcan-01 (flowed @ 3.7 MMscfd)

Channel Levee

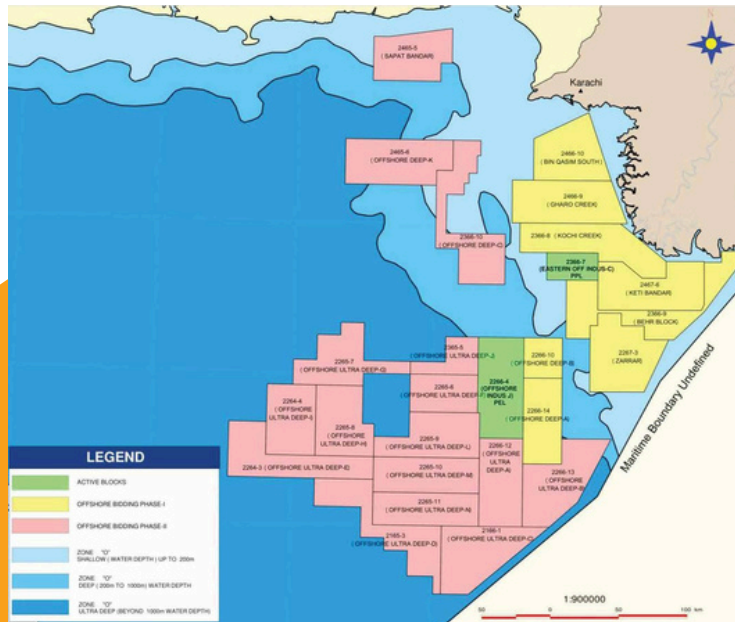
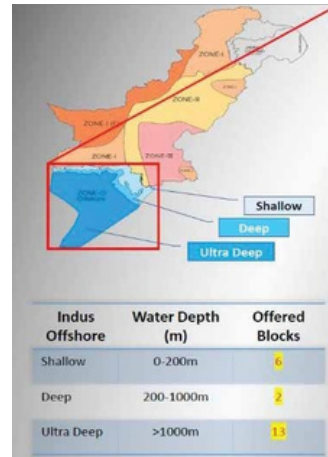
Untested –A vast Frontier

Deep Water Carbonate Buildup

Drilled in Pak G2-1 & Kekra-01, excellent reservoirs but limited knowledge about charge

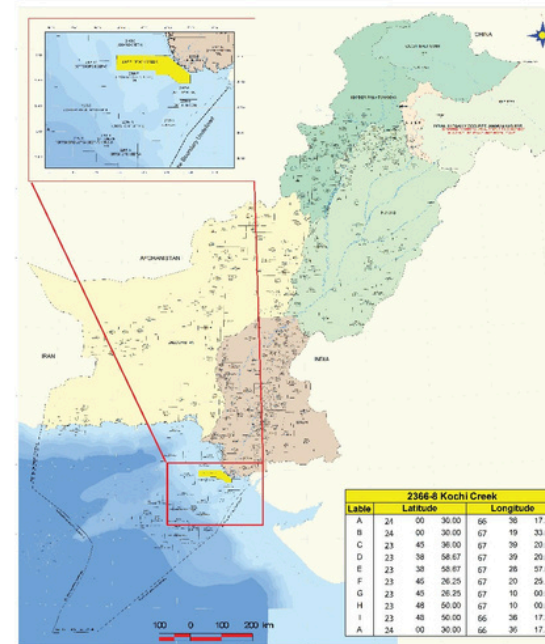
INDUS OFFSHORE BLOCK KOCHI CREEK (2366-8)

Offshore Bidding Phase-I			
S. No.	Blocks	Area Sq.Kms	Grid Area
1	2466-10 Bin Qasim South	2021.69	26.00
2	2466-9 Gharo Creek	2453.05	31.49
3	2366-8 Kochi Creek	2450.14	31.32
4	2367-6 Keti Bandar	2464.75	31.47
5	2366-9 Behr Block	2481.44	31.62
6	2267-3 Zarrar	2424.8	30.74
7	2266-10 Offshore Deep-B	833.78	10.56
8	2266-14 Offshore Deep-A	1774.2	22.33



KOCHI CREEK (2366-8) INTRODUCTION

Location Map of Kochi Creek



2366-8 Kochi Creek		
Label	Latitude	Longitude
A	24 00 30.00	66 36 17.7
B	24 00 30.00	67 19 32.0
C	23 45 36.00	67 39 20.0
D	23 38 58.67	67 29 20.0
E	23 30 58.67	67 26 57.1
F	23 46 26.25	67 20 25.1
G	23 45 26.25	67 10 00.0
H	23 48 50.00	67 10 00.0
I	23 40 50.00	66 36 17.7
A	24 00 30.00	66 36 17.7



2366-8 Kochi Creek		Available Data		Total Area (Sq. Kms)
Zone	O	2D Seismic (L.Kms)	10662.31	2450.14
Grid Area	31.32	3D Seismic (Sq.Kms)	410.99	
		No. Wells	NA	

Key Highlights

Area: 2450.14 Sq. Kms.

Geological Basin: Offshore Indus Basin Pakistan.

Prospectivity Zone: O

Gharo Creek (North), Behr (South) and Offshore Deep C (West) blocks.

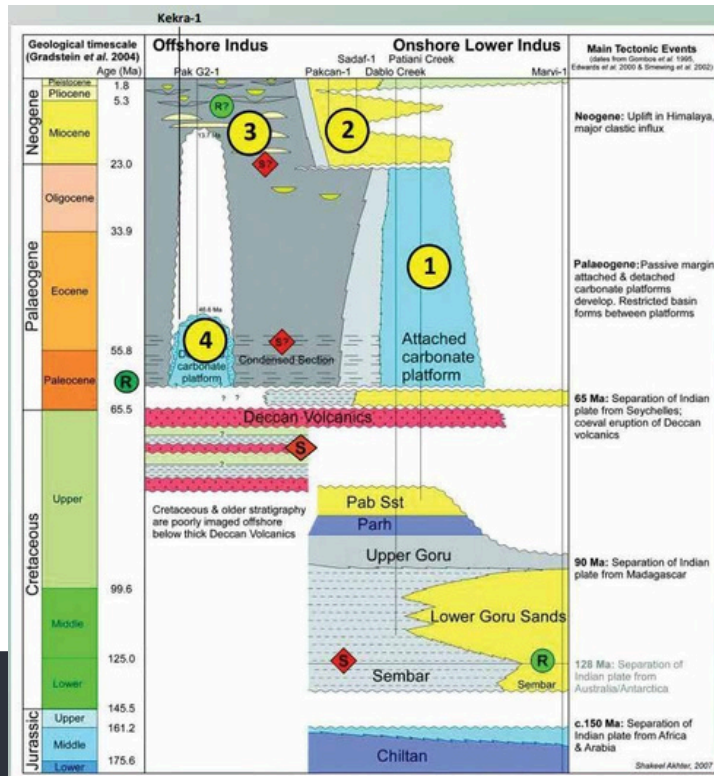
Vicinity wells: Pakcan-01 and Indus Marine-1B.

Pakcan-01 flowed 3.7 MMscfd gas from Middle Miocene Sandstone.

This shows the petroleum system exists and well may be drilled at the edge of sand body.

Indus Marine-1B indicated gas shows but failed due to mechanical issues. (Gong et al., 2020).

STRATIGRPHY & PETROLEUM SYSTEM



Source Rock

Paleocene section with toc ranging from 1-3%.

Play Types: Miocene Delta

Tested by 5 wells.

Few off structure & few didn't find reservoir.

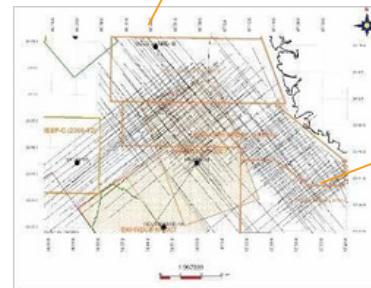
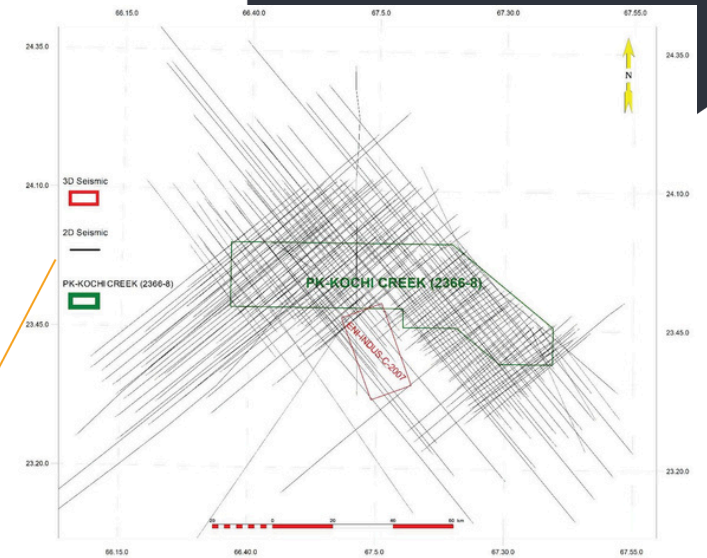
Reservoir Seal Pairs

Miocene deltaic sands act reservoir
The mud-clay dominated sediments.
And intraformational shales packages of Miocene.
Oligocene may act as seal for potential reservoirs.

Trap Geometries

Fault block and rollover against growth faults in shelf margin basin. Pinch outs are also observed..

AVAILABLE DATASETS



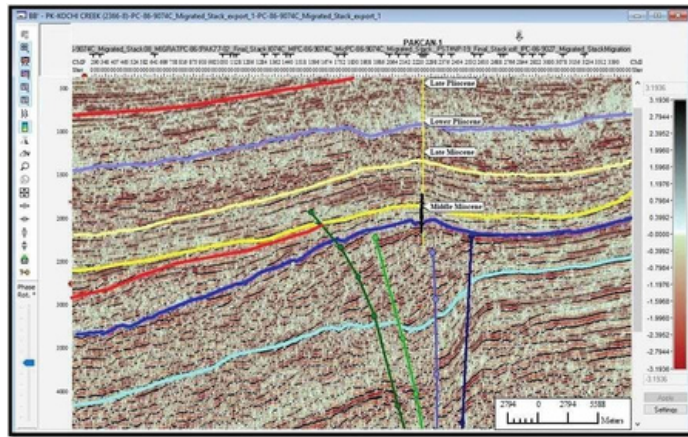
Seismic Data

10602.308575 2D (L.Km's)
410.99 3D (Sq.Km's)

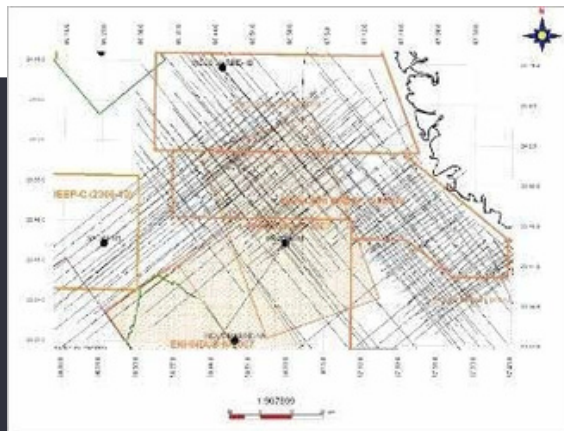
Wells

No well
Pakcan-01 - drilled in adjacent block

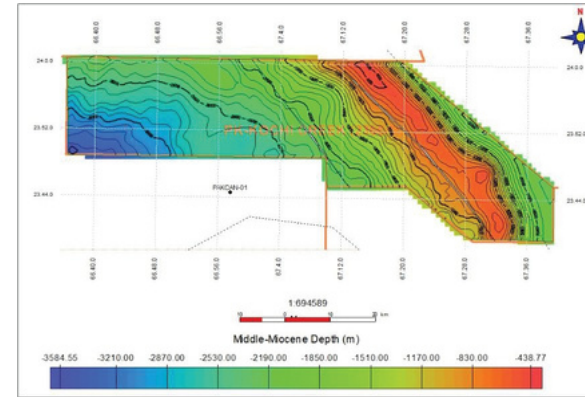
INTERPRETED SEISMIC SECTION



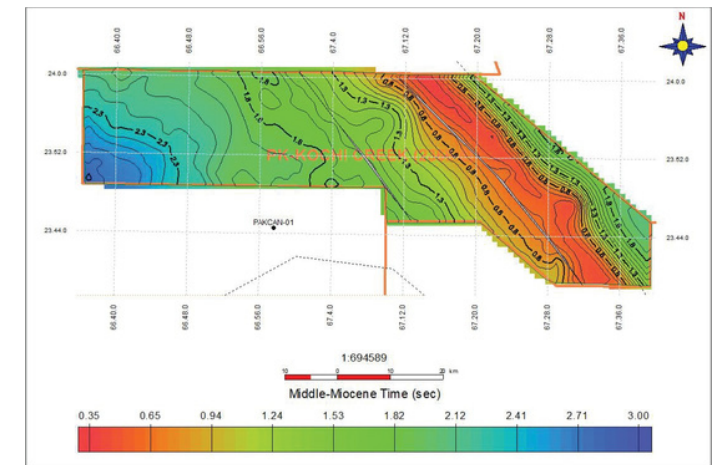
Fault block and rollover against growth faults in shelf margin basin. Pinch outs are also observed.



MIDDLE MIOCENE MAPS



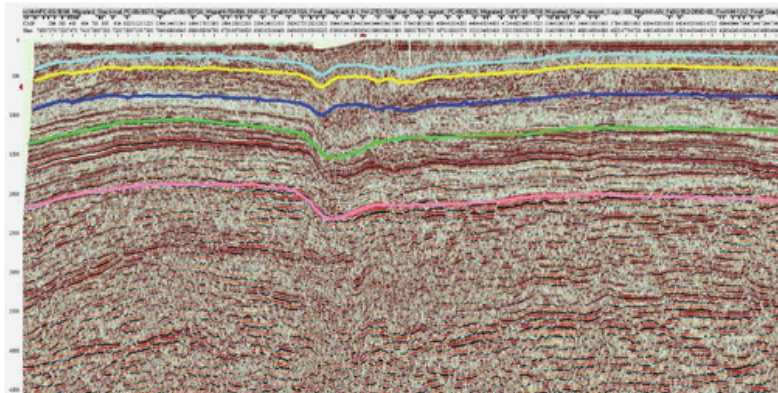
Depth (m) Map



TWT (Sec) Map

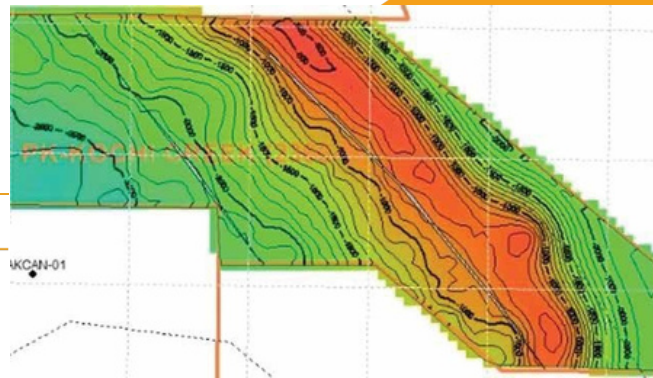
Structural highs / culminations are observed at 0.35-0.65 sec and -830-(-438.77) mTVDSS

BLOCK POTENTIAL



- Lower Pliocene
- Late Miocene
- Middle Miocene
- Base Miocene
- Early Miocene

LEAD NAME	A
Reservoir Age	Miocene
Water Depth	120m
Target Depth	1300 m
Area	100 Sq. Km Mean Value
Net Thickness	10m Mean Case]
OGIP (Mean)	~2100 Bcf



Risks

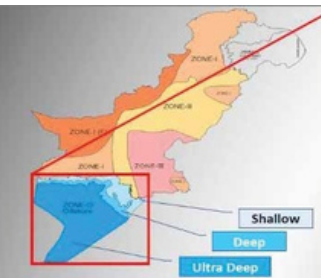
- Source & charge: low risk
- Reservoir: low to medium risk
- Seal: low to medium risk
- Trap: low to medium risk

OPPORTUNITIES

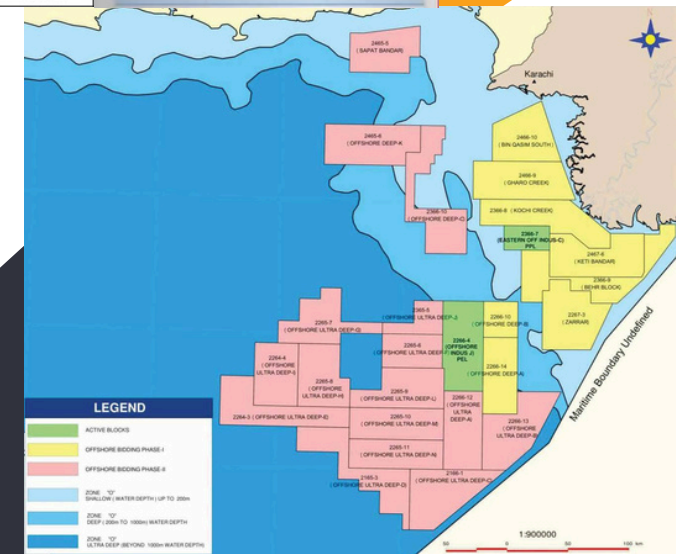
- Pakistan Offshore basin is divided into two major basins with multiple plays.
- Indus Offshore is the largest and least-explored basin with estimated Resource potential of 10-40 TCF.
- Indus Offshore has a working petroleum system proven by noncommercial flow of 3.7 MMcfd at Pakcan-01.
- Majority is Gas play with Possibility of oil play in the eastern periphery

INDUS OFFSHORE BLOCK DEEP K (2465-6)

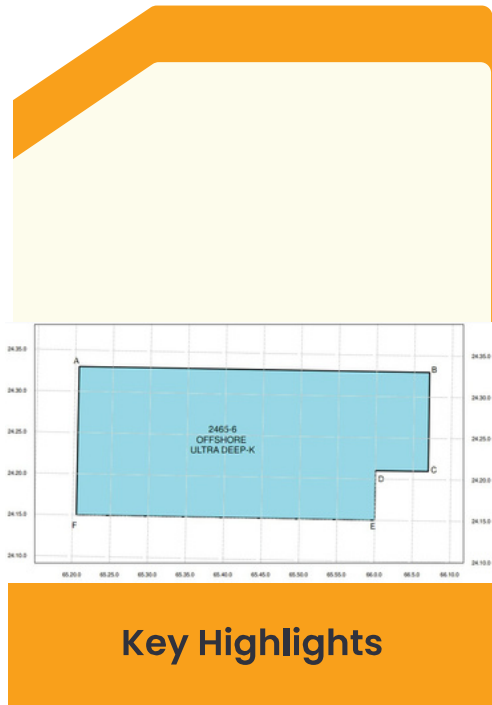
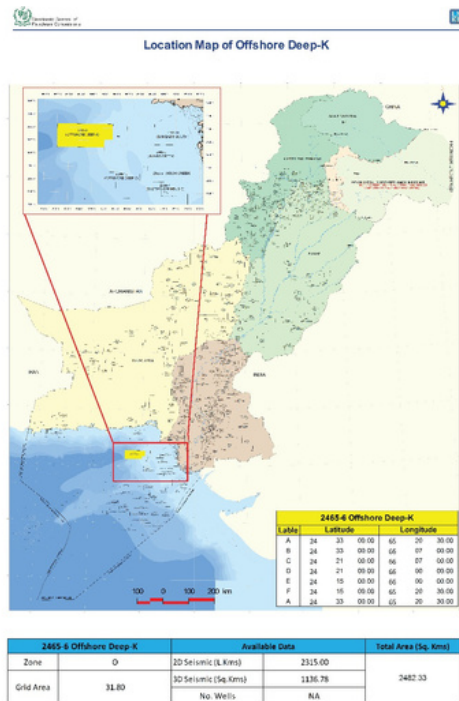
Offshore Bidding Phase-II			
S. No.	Blocks	Area Sq.Kms	Grid Area
1	2266-12 Offshore Ultra Deep-A	2055.49	25.87
2	2266-13 Offshore Ultra Deep-B	2451.61	30.85
3	2166-1 Offshore Ultra Deep-C	2475.04	31.01
4	2165-3 Offshore Ultra Deep- D	2444.86	30.63
5	2264-3 Offshore Ultra Deep- E	2429.76	30.44
6	2265-6 Offshore Ultra Deep- F	1373.56	17.36
7	2265-7 Offshore Ultra Deep- G	2048.36	26.00
8	2265-8 Offshore Ultra Deep- H	1976.92	24.98
9	2264-4 Offshore Ultra Deep- I	1859.69	23.50
10	2365-5 Offshore Ultra Deep- J	900.36	11.40
11	2465-6 Offshore Deep- K	2482.33	31.80
12	2366-10 Offshore Deep- C	2482.83	31.69
13	2265-9 Offshore Ultra Deep- L	2087.59	27.83
14	2265-10 Offshore Ultra Deep- M	1999.10	26.65
15	2265-11 Offshore Ultra Deep- N	1860.21	24.80
16	2465-5 Sapat Bandar	1894.66	24.49



Indus Offshore	Water Depth (m)	Offered Blocks
Shallow	0-200m	6
Deep	200-1000m	2
Ultra Deep	>1000m	13



OFFSHORE DEEP K (2465-6) INTRODUCTION



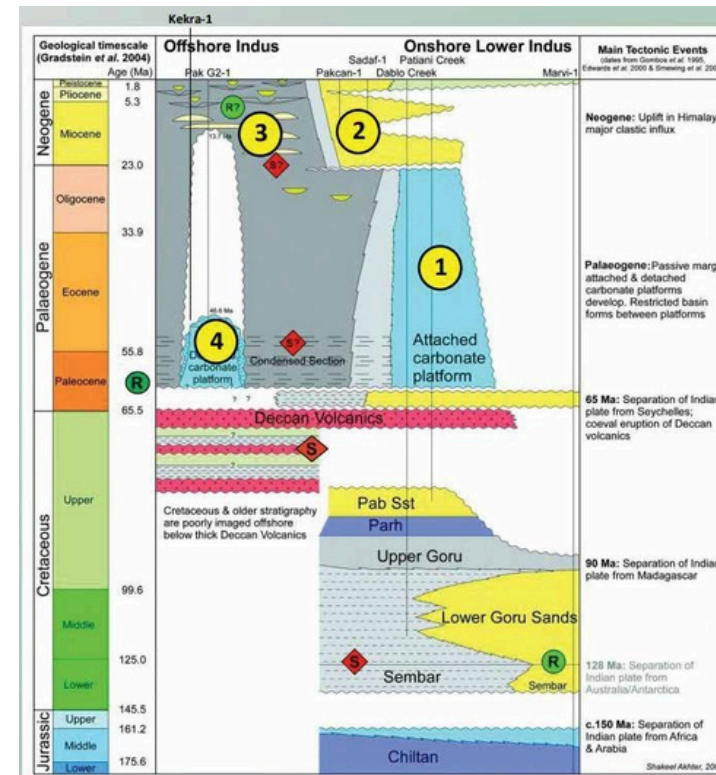
Area: 2482.33 Sq. Kms.

Geological Basin: Offshore Indus Basin Pakistan.

Prospectivity Zone: O
Offshore Deep C (South) block.

Vicinity wells: Indus Marine-1C and Indus Marine-1D.
Results from Indus Marine 1C indicate a mature source (medium to light oil); modern well control can overcome the high formation pressures in Eocene reservoir.

STRATIGRAPHY & PETROLEUM SYSTEM



Source Rock
Paleocene section with toc ranging from 1-3%.

Seal Pairs

Miocene deltaic sands act as reservoir

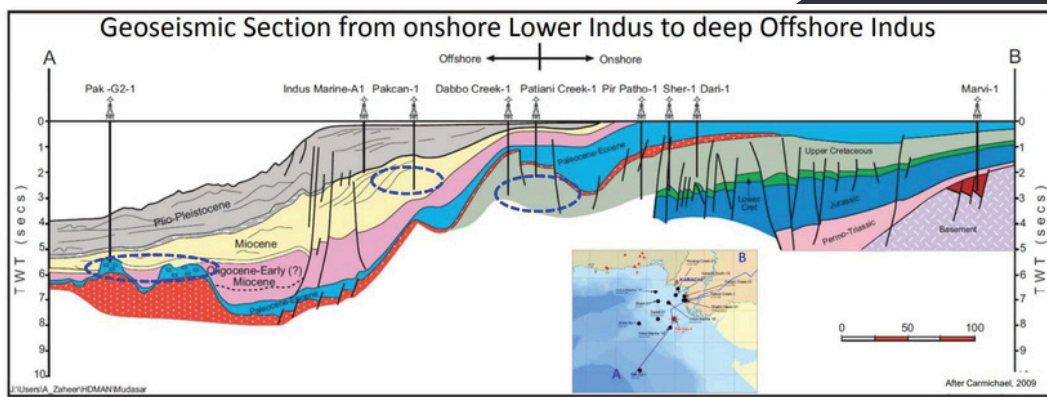
The mud-clay dominated sediments and intraformational shales packages of Miocene act as seals.

Eocene Carbonates overlain by clay are also perspective reservoirs

Trap Geometries

Rollovers / Growth fault related anticlines, pinchouts along with deeper carbonate structures

GEOSEISMIC SECTION DEEP OFFSHORE

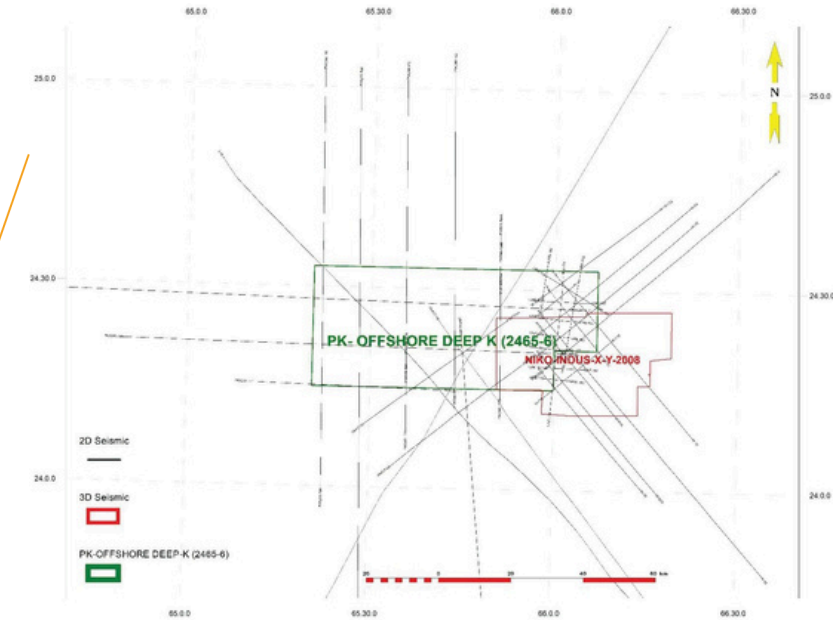


Play Types: Carbonate Buildups

Tested by 1 well (Indus Marine-1C).

Mechanical Failure prevented reaching target.

GEOSEISMIC SECTION DEEP OFFSHORE



Seismic Data

2315 2D (L. Km's)

1136.78 3D (Sq.Km's)

Wells

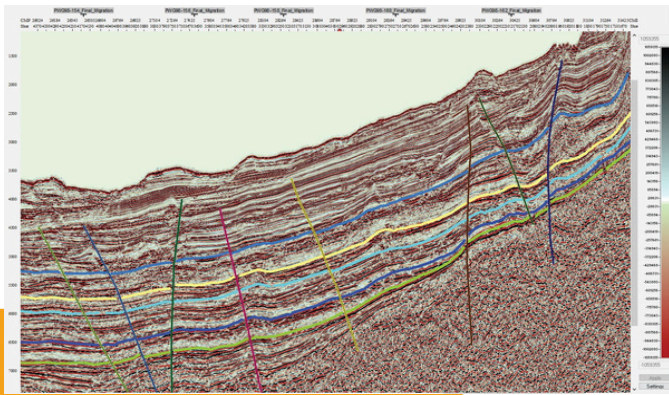
No well

Indus Marine-1C and

Indus Marine-1D

drilled in adjacent block

INTERPRETED SEISMIC SECTION

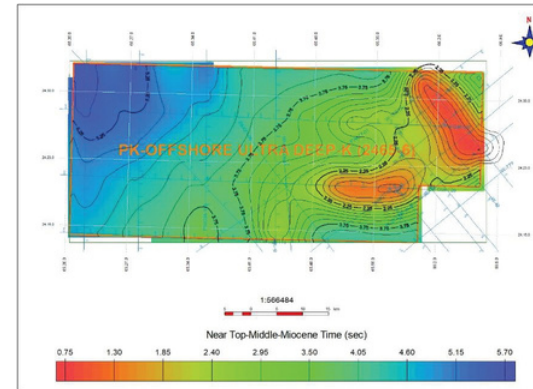


- Intra-Tarntonian
- Near Top Miocene
- Near Base Middle Miocene
- Intra Middle Miocene I
- Intra Middle Miocene II

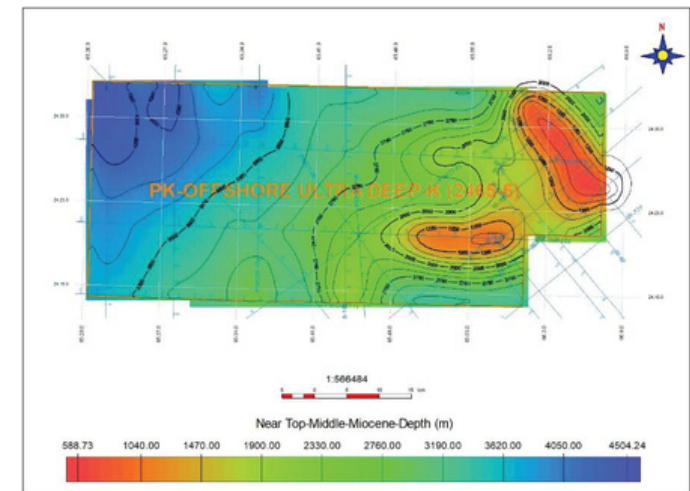
Fault block and rollover against growth faults in shelf margin basin. Pinch outs are also observed.



INTERPRETED SEISMIC SECTION



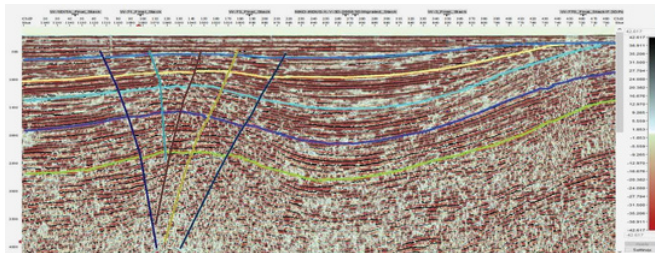
TWT (Sec) Map



Depth (m) Map

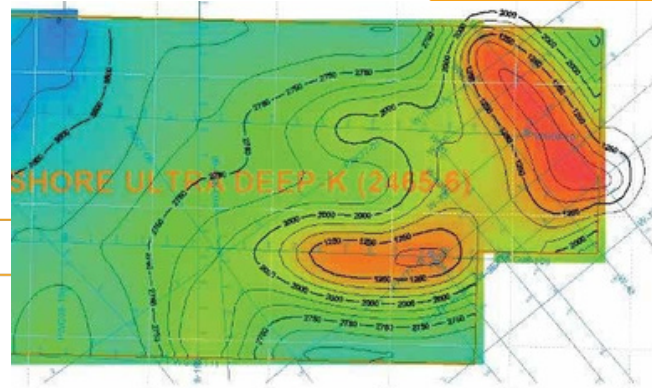
Structural highs / culminations are observed at 588.73-1040 mTVDSS

BLOCK POTENTIAL



- Intra-Tortonian
- Near Top Miocene
- Near Base Middle Miocene
- Intra Middle Miocene I
- Intra Middle Miocene II

LEAD NAME	A
Reservoir Age	Miocene
Water Depth	200-800m
Target Depth	1250 m
Area	90.58 SqKm Mean Value
Net Thickness	10m Mean Case
GIIP (Mean)	1800.16 Bcf



Risks

- Source & charge: medium to high risk
- Reservoir: low to medium risk
 - Seal: low to medium risk
 - Trap: low to medium risk

OPPORTUNITIES

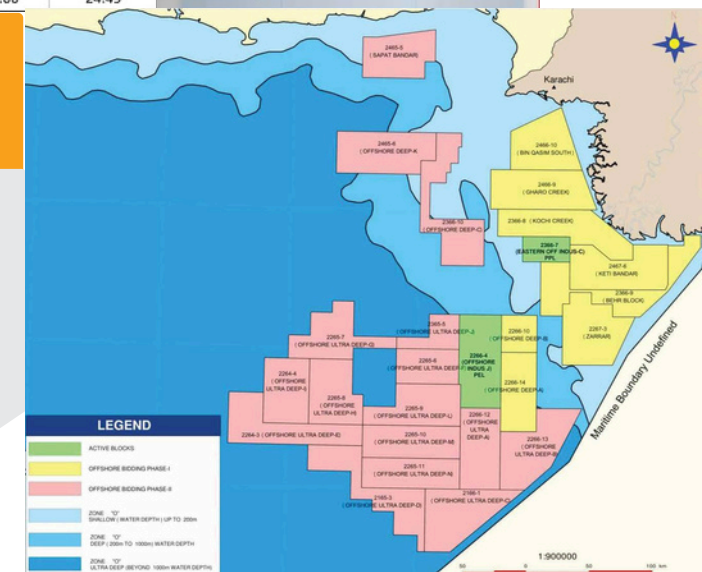
- Pakistan Offshore basins is divided into two major Basins (Indus & Makran) with multiple plays.
- Indus Offshore is the largest and least-explored basin with estimated Resource potential of 10-40 TCF.
 - Indus Offshore has a working petroleum system proven by noncommercial flow of 3.7 MMcf/d a Pakcan-01.
 - Majority is Gas play with Possibility of oil play in the eastern periphery

INDUS OFFSHORE BLOCK ULTRA DEEP C (2166-1)

Offshore Bidding Phase-II			
S. No.	Blocks	Area Sq.Kms	Grid Area
1	2266-12 Offshore Ultra Deep-A	2055.49	25.87
2	2266-13 Offshore Ultra Deep-B	2451.61	30.85
3	2166-1 Offshore Ultra Deep-C	2475.04	31.01
4	2165-3 Offshore Ultra Deep- D	2444.86	30.63
5	2264-3 Offshore Ultra Deep- E	2429.76	30.44
6	2265-6 Offshore Ultra Deep- F	1373.56	17.36
7	2265-7 Offshore Ultra Deep-G	2048.36	26.00
8	2265-8 Offshore Ultra Deep-H	1976.92	24.98
9	2264-4 Offshore Ultra Deep-I	1859.69	23.50
10	2365-5 Offshore Ultra Deep-J	900.36	11.40
11	2465-6 Offshore Deep-K	2482.33	31.80
12	2366-10 Offshore Deep-C	2482.83	31.69
13	2265-9 Offshore Ultra Deep-L	2087.59	27.83
14	2265-10 Offshore Ultra Deep-M	1999.10	26.65
15	2265-11 Offshore Ultra Deep-N	1860.21	24.80
16	2465-5 Sapat Bandar	1894.66	24.49

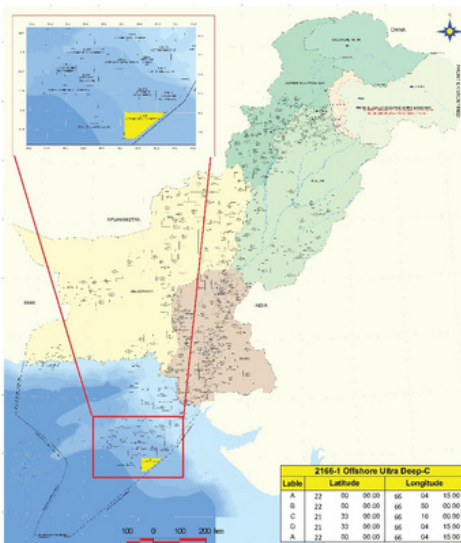


Indus Offshore	Water Depth (m)	Offered Blocks
Shallow	0-200m	6
Deep	200-1000m	2
Ultra Deep	>1000m	13

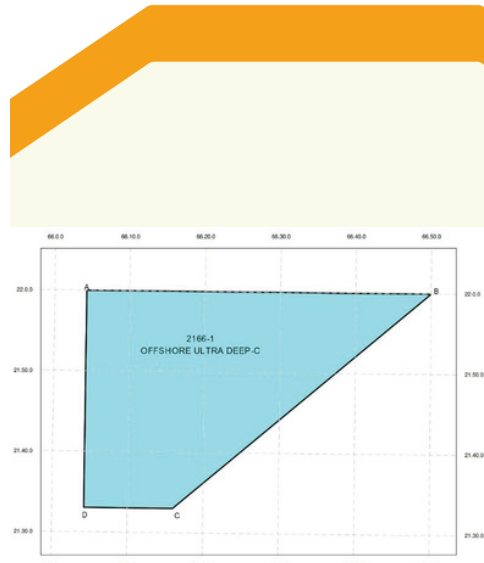


OFFSHORE ULTRA DEEP C (2166-1) INTRODUCTION

Location Map of Offshore Ultra Deep-C



Label	Latitude	Longitude
A	22 50 00.00	66 04 15.90
B	22 50 00.00	66 30 00.00
C	21 33 00.00	66 16 00.00
D	21 33 00.00	66 04 15.90



Key Highlights

2166-1 Offshore Ultra Deep-C		Available Data		Total Area (Sq. Kms)
Zone	O	2D Seismic (L.Kms)	5396.58	2475.04
Grid Area	31.01	3D Seismic (Sq.Kms)	NA	
		No. Wells	NA	

Area: 2475.04Sq. Kms.

Geological Basin: Offshore Indus Basin Pakistan.

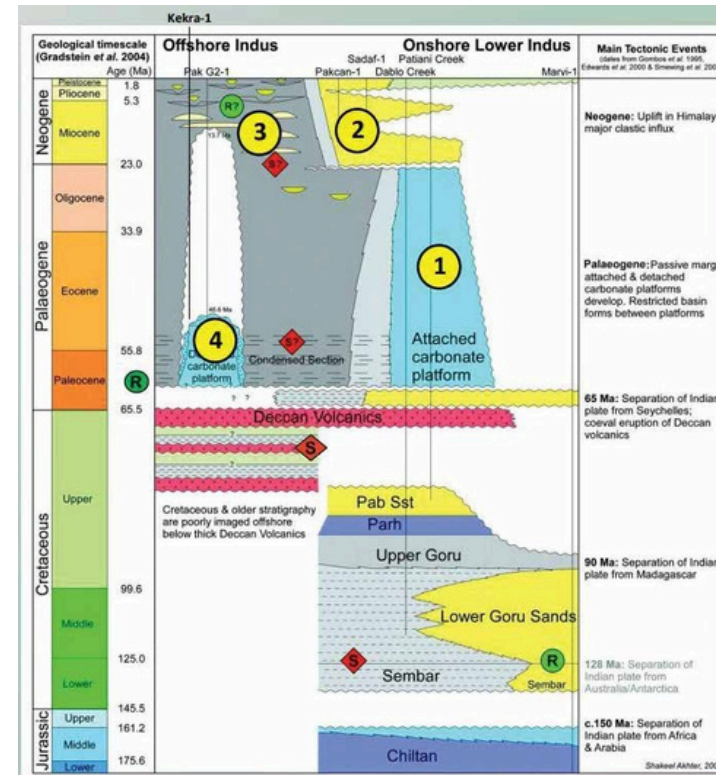
Prospectivity Zone: O

Offshore Ultra Deep A (North) and Offshore Ultra Deep D(West) blocks

Vicinity wells: akG2-01 and Kekra-01.

PakG2-01 primary target tertiary carbonate. Lack of charge (Gong et al., 2020). Kekra-01 reached TD Formation i.e., Paleogene Carbonate. Good reservoir but a lack of charge hampered further development (Gong et al., 2020).

STRATIGRPHY & PETROLEUM SYSTEM



Source Rock
Paleocene section with TOC ranging from 1-3%.

Reservoir Seal Pairs

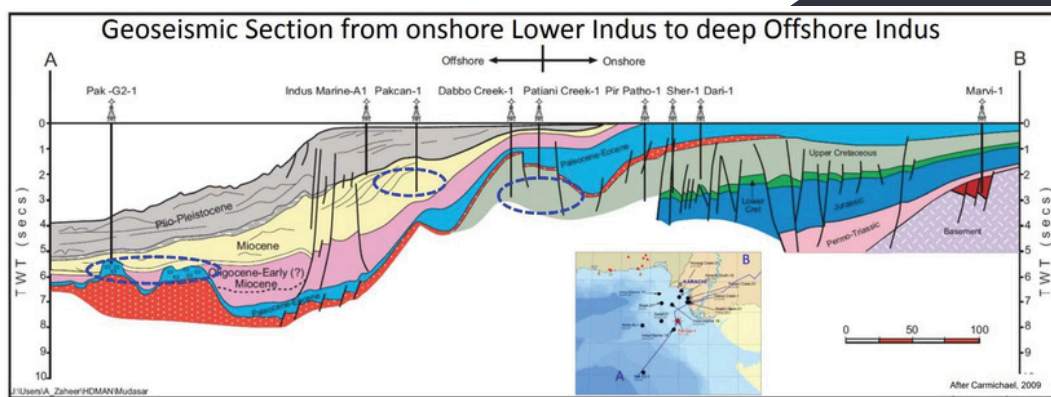
The intraformational shales packages of Miocene.

Oligocene may act as seal for potential reservoirs.

Trap Geometries

Carbonate platforms and reefs deposits (Oligocene, Paleocene Carbonate platform)

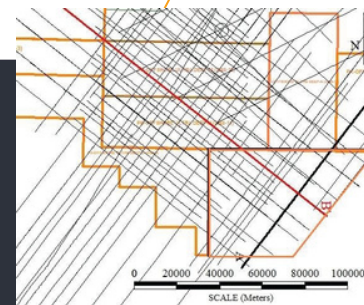
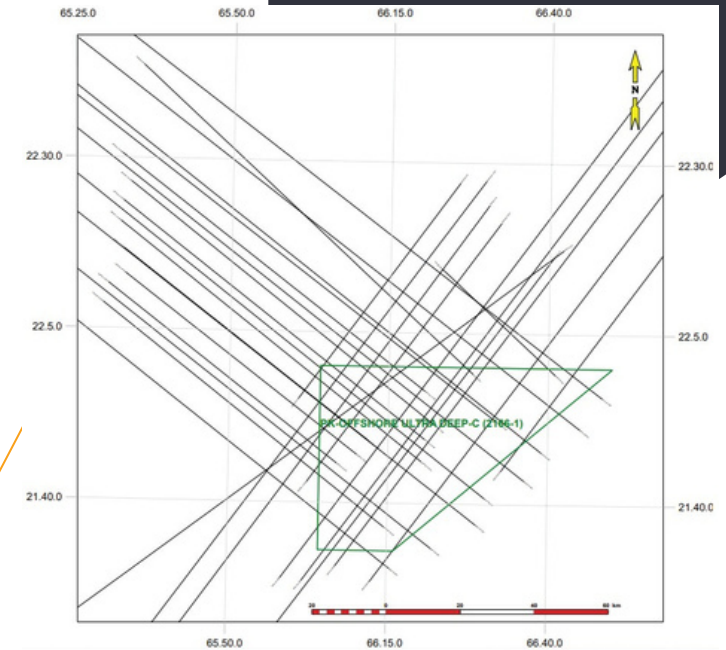
GEOSEISMIC SECTION ULTRA DEEP OFFSHORE



Play Types: Deep water Carbonate buildup and turbidities

Drilled in Pak G2-1 & Kekra, excellent reservoirs but lack of charge

AVAILABLE DATASETS



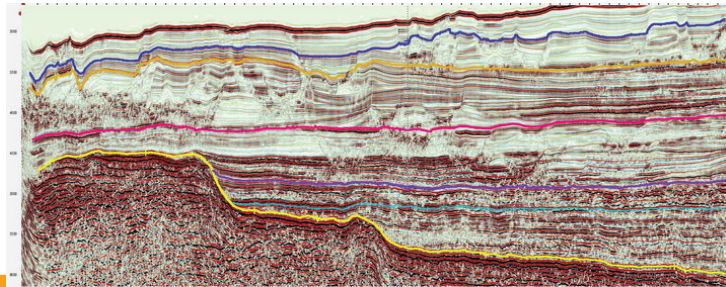
Seismic Data

5396.58 2D (L. Km's)
No 3D

Wells

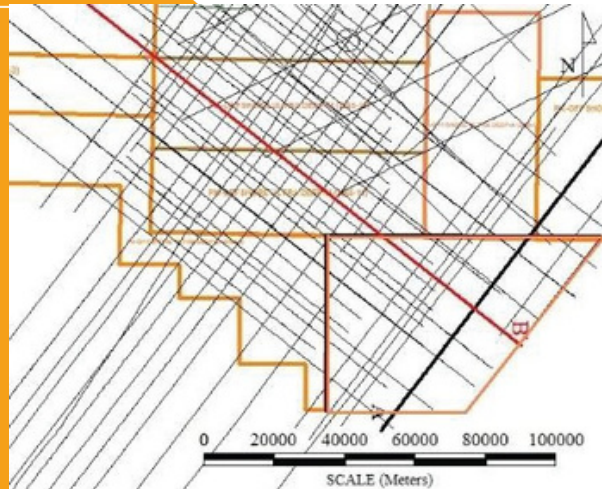
No well
PakG2-01 and Kekra-01 drilled
in adjacent block

INTERPRETED SEISMIC SECTION

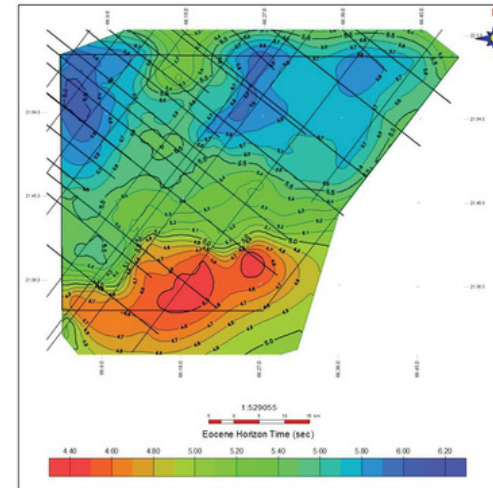


- Intra-Tortonian
- Near Top Miocene
- Pinch out
- Intra Middle Miocene
- Pinch out
- Eocene

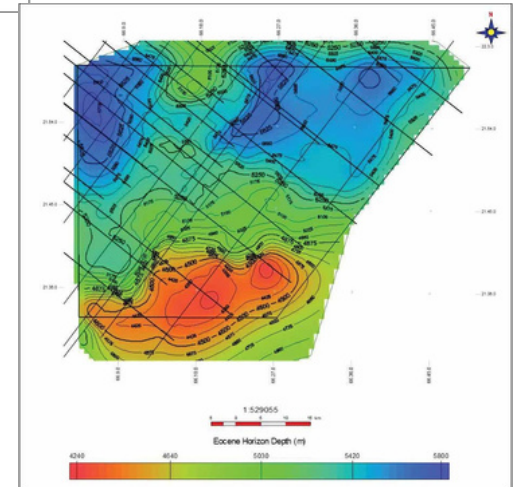
Carbonate platforms and reefs deposits
Pinch outs are also observed.



EOCENE MAPS



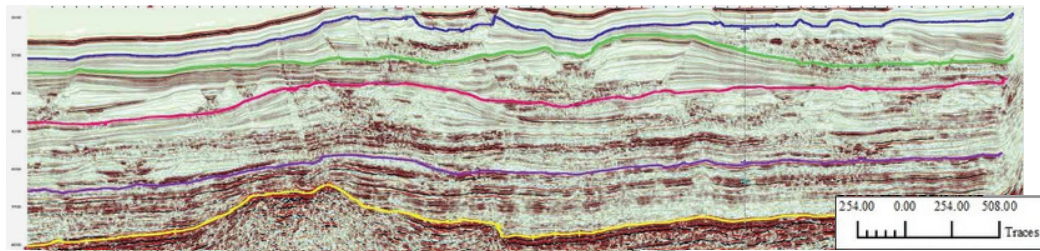
TWT (Sec) Map



Depth (m) Map

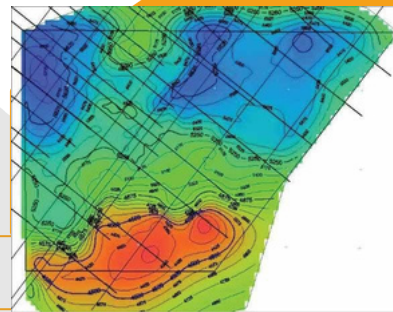
Structural highs / culminations are observed
at 4300-4500 mTVDSS.

BLOCK POTENTIAL



LEAD NAME	A
Reservoir Age	Eocene
Water Depth	1900-2500m
Target Depth	4500 m
Area	290 Sq.Km Mean Value
Net Thickness	10m Mean Case
GIIP (Mean)	2500 BCF

- Intra-Tartonian
- Near Top Miocene
- Eocene
- Intra Middle Miocene
- Lower Miocene



Risks

- Source & charge: medium to high risk
- Reservoir: low to medium risk
 - Seal: low to medium risk
 - Trap: low to medium risk

OPPORTUNITIES

- Pakistan Offshore basins is divided into two major Basins (Indus & Makran) with multiple plays.
- Indus Offshore is the largest and least-explored basin with estimated Resource potential of 10-40 TCF.
 - Indus Offshore has a working petroleum system proven by noncommercial flow of 3.7 MMcfd at Pakcan-01.
 - Majority is Gas play with Possibility of oil play in the eastern periphery



www.ppisonline.com