



Smart Solutions for Today's Geoscientist



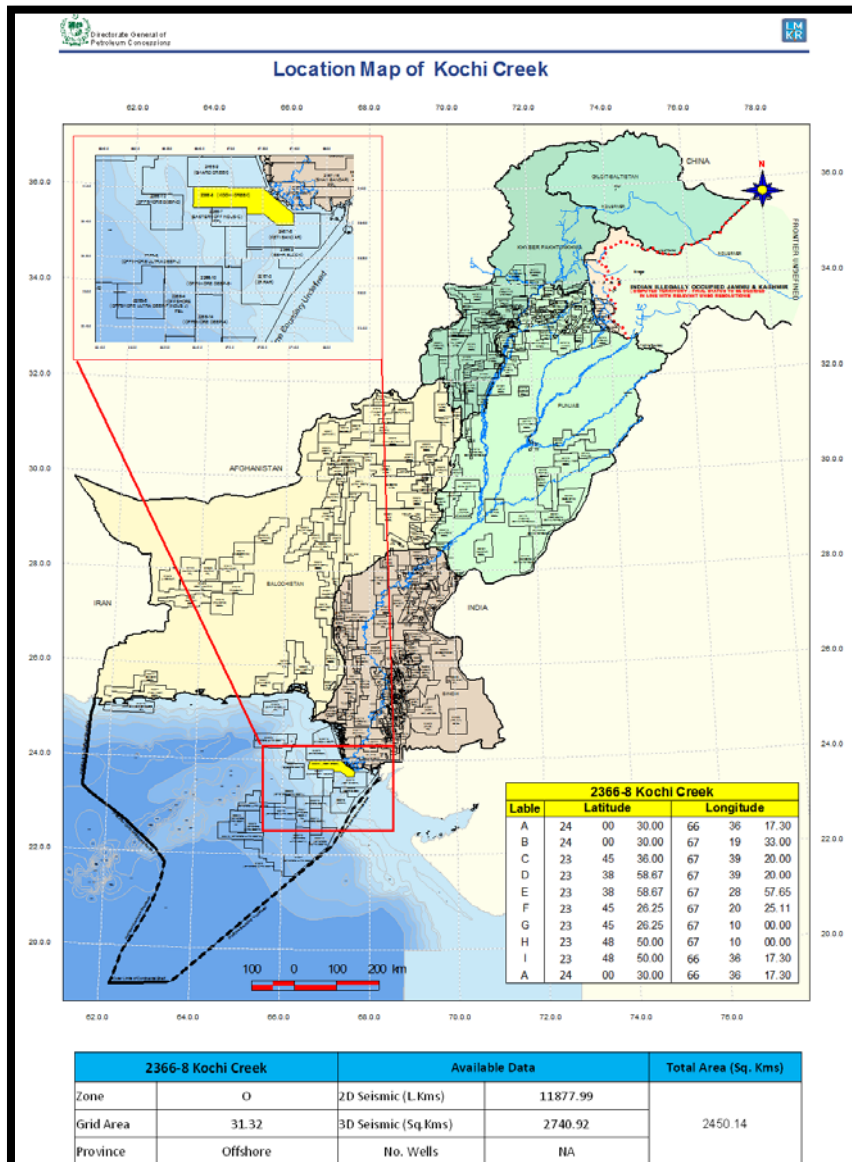
BLOCK: KOCHI CREEK

OFFSHORE BIDDING BLOCK ROUND 2023

MINISTRY OF ENERGY PETROLEUM DIVISION (DGPC)

INTRODUCTION

- Kochi Creek Block covers an area of 2450.14 Sq. Kms.
- Geological Basin: Offshore Indus, Basin Pakistan.
- The block falls in Prospectivity Zone O.
- ELF, Lasmco, BP, OXY, Phillips, Husky, PC, Wintershall, OXY, Shell, OGDCL acquired 2D and 3D seismic data approximately 11877.99 L. Kms and 2740.9195 Sq. Kms in the block within the years 1969, 1972, 1976, 1977, 1978, 1982, 1986, 1988, 1989, 1998, 1999, 2007 and 2009 respectively.
- The Block is surrounded by Gharo Creek (North), Behr (South) and Offshore Deep C (West) blocks.
- The wells drilled in the near vicinity is Pakcan-01 and Indus Marine-1B.



GEOLOGICAL HISTORY

Late Cretaceous – Early Paleocene:

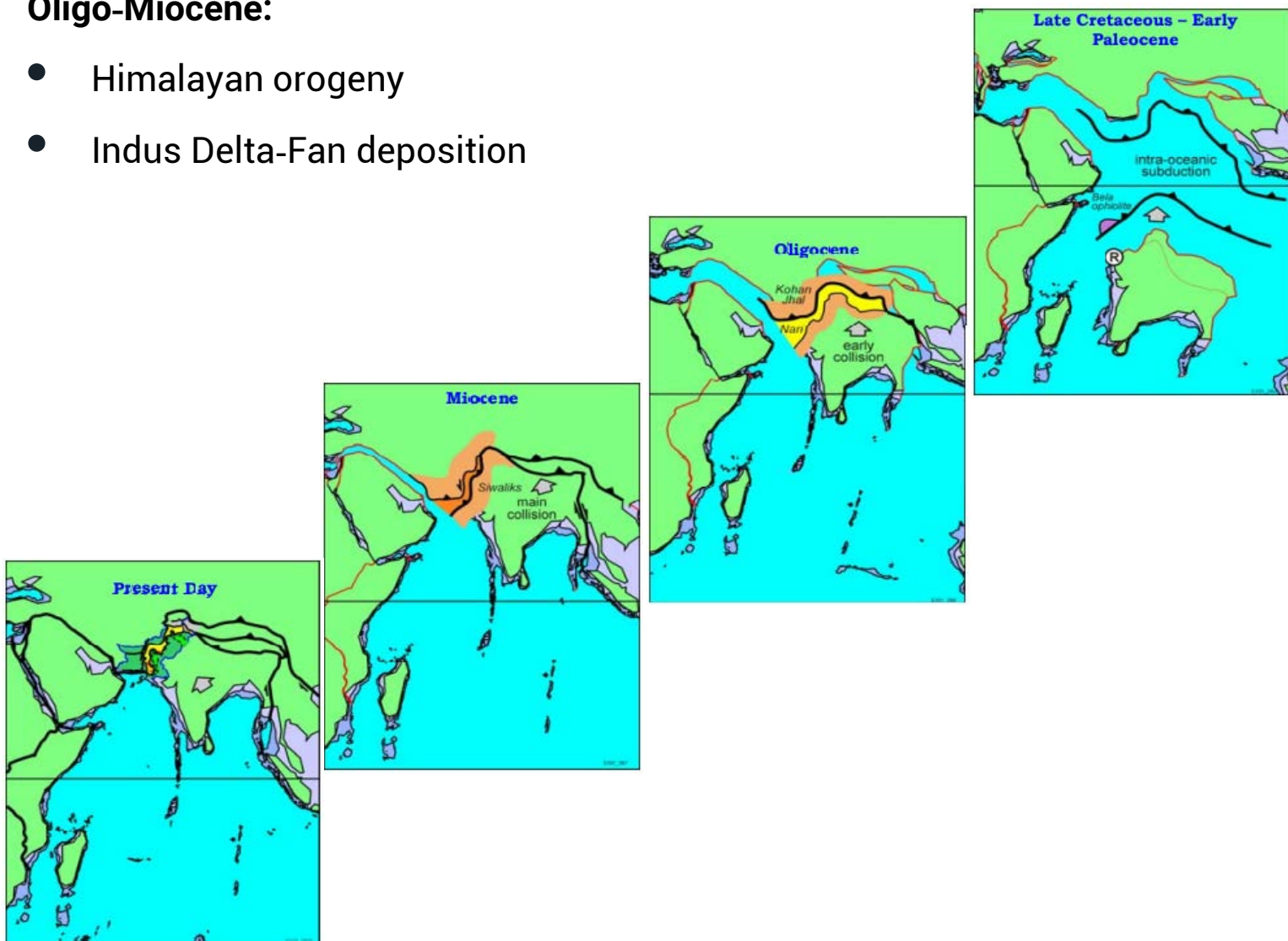
- Rapid northward movement of Indian Plate after separation from Madagascar
- Bela ophiolites obduction
- Extrusion of Deccan Volcanics

Paleocene - Eocene:

- Deposition of limestone on seamounts and shales in lows / depressions

Oligo-Miocene:

- Himalayan orogeny
- Indus Delta-Fan deposition





PETROLEUM SYSTEM

Source Rock:

- Lower Cretaceous Sembar can be the source rock.
- Paleocene carbonates and Miocene shales can act as source rock.

Reservoir Rock:

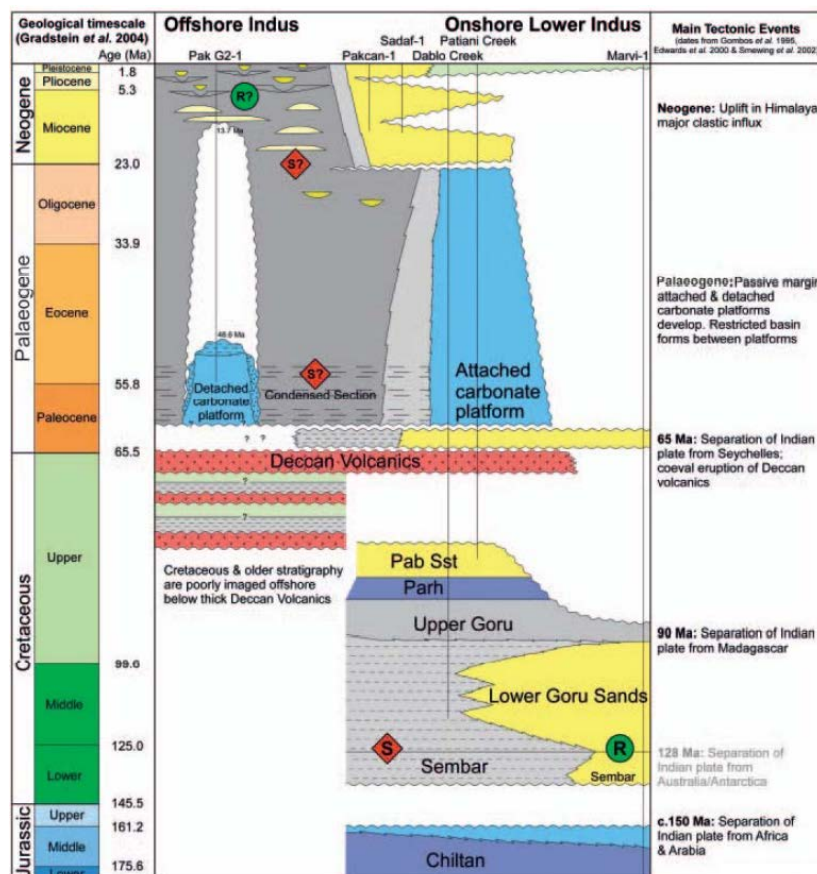
- Upper Cretaceous Pab and Paleocene Ranikot Formations can be reservoir targets in near shore areas.

Seal:

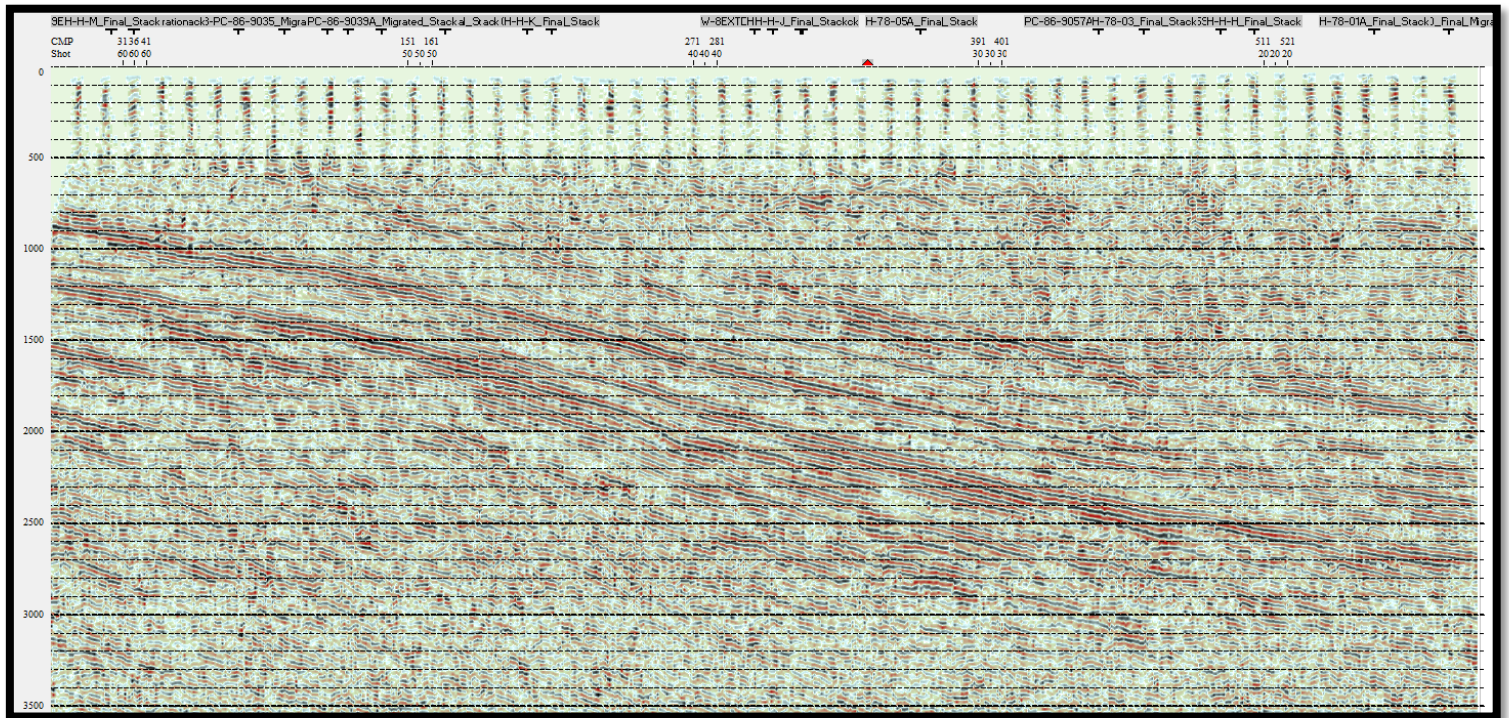
- Mud dominated sediments and intraformational shales packages will provide seals for potential reservoirs.

Trap:

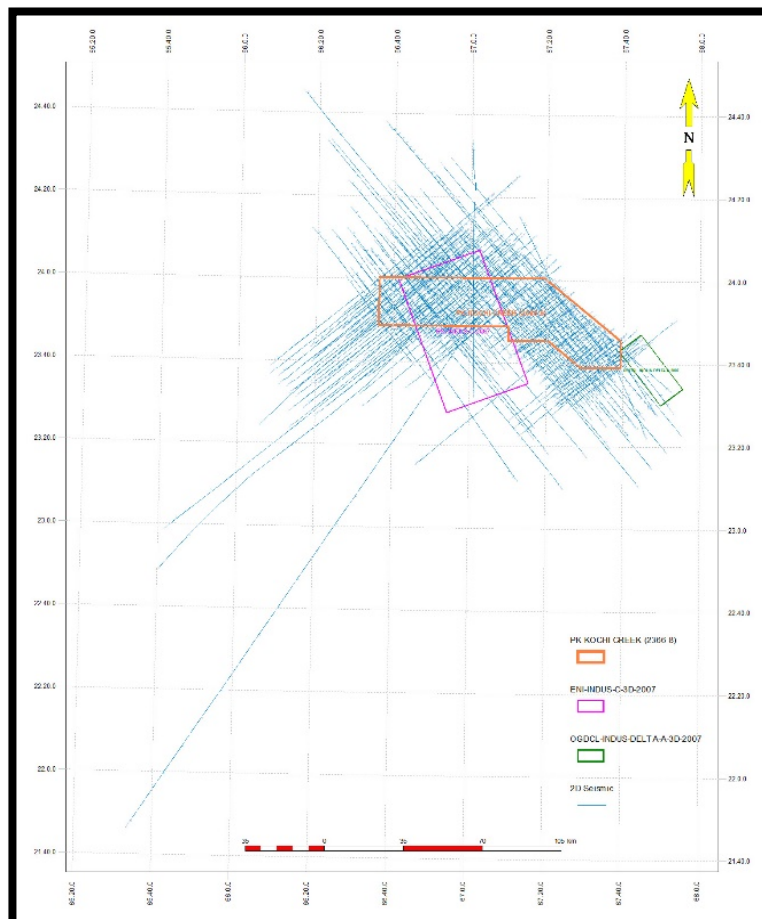
- Both structural and stratigraphic traps
- Eocene carbonates build ups over seamounts, growth faults, roll-over anticlines and stratigraphic traps within deltaic fan system (e.g., bars, barrier islands and pinch-out / facies change etc.) are likely trapping mechanisms



PROSPECTIVITY



- High resolution seismic data can allow to delineate true potential of the block
- Both structural and stratigraphic traps



EXPLORATION RISKS



- Source & Charge: Medium to High risk
- Reservoir: Low to Medium risk
- Seal: Low to Medium risk
- Trap: Low to Medium risk
- Key challenges for future exploration in Tertiary Petroleum System are to establish:
 - Distribution and timing of effective source intervals' development within the drainage area of prospect.
 - Timing of over-pressuring (up to 7000 psi at 2800m in Indus Marine-1A well) within Miocene section (for Miocene and younger targets) with respect to source rock maturation and expulsion.

Comparison suggests that discoveries in offshore deltas have been made in:

- Extension of proven onshore petroleum system to offshore at drillable depth (e.g. Niger, Nile, Irrawady & Mahakam deltas)
- Reservoir – Seal pairs associated with good quality but less mature source rock drilled onshore (at shallow depths) progressively mature in offshore (e.g. Krishna-Godavri and Nile deltas)
- Biogenic gas found in shallow younger Tertiary section (e.g. Krishna-Godavri and Nile deltas)

International offshore exploration efforts in delta areas have generally been successful due to:

- Extension of established onshore petroleum system to offshore at drillable depths
- Good quality less mature source rock drilled onshore progressively mature in offshore
- Gas discoveries of biogenic origin



OFFSHORE BIDDING BLOCK ROUND 2023

MINISTRY OF ENERGY PETROLEUM
DIVISION (DGPC)